



# *Next Generation R-Series Oil-Flooded Rotary Screw Air Compressors*

*200-250 kW (250-350hp)*



# The intelligence you need to move your business forward

Ingersoll Rand works to keep you ahead of your competition with advanced compressed air systems that boost productivity, lower operating expenses and extend equipment life. These innovations are designed into every Next Generation R-Series oil-flooded rotary screw air compressor—industry-leading airend enhancements for superior efficiency, world-class delivered capacity and exceptional reliability. All supported by unique advantages, including expert design and engineering, a comprehensive suite of support programs and long-life Ingersoll Rand-branded consumables.

**Next Generation R-Series compressors. The intelligence you need—to win.**

## Global presence, local service



### Manufacturing sites

- Buffalo, NY USA
- Campbellsville, KY USA
- Mocksville, NC USA
- West Chester, PA USA
- Curitiba, Brazil
- Unicov, Czech Republic
- Wasquehal, France
- Oberhausen, Germany

- Fogliano, Italy
- Milan, Italy
- Vignate, Italy
- Ahmedabad, India
- Shanghai, China
- Wujiang, China

### Global distribution centers

- Charlotte, NC USA
- Genk, Belgium
- Singapore
- Shanghai, China

# Efficient operation and powerful information

## We started at the core

When we made the Next Generation R-Series we started with an all-new, state-of-the-art airend, making it your best choice for performance. The new airend improves efficiency as much as 18% through several advancements, including an optimised rotor profile to help minimise operating expenses. The new rotor profile also provides world-class airflow, delivering up to 21% more than previous models. With more airflow for the same power input, your compressor requirements are smaller, reducing both investment costs and energy usage, to lower your total cost of ownership.



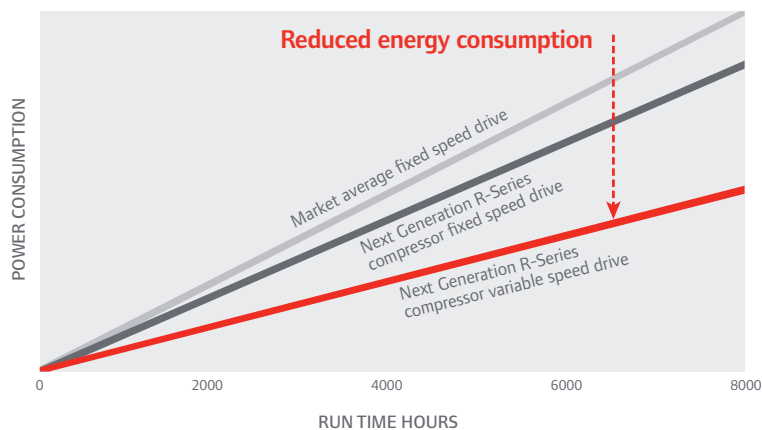
## Knowledge is power

The best compressors deliver air and actionable information. That's why every Next Generation R-Series compressor includes an Xe-Series intelligent controller that monitors key operations and adjusts system parameters to maximise uptime and minimise energy consumption. It gives you real-time facts to make and execute informed decisions...from virtually anywhere in the world.

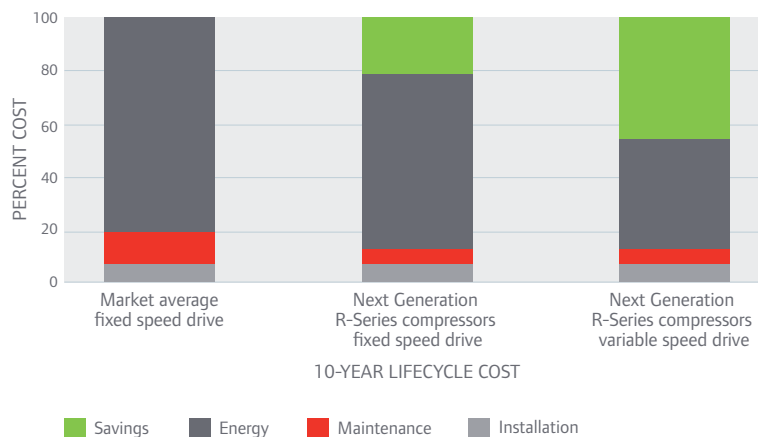


## Driving toward maximum efficiency

Every Next Generation R-Series compressor's drive motor features an advanced induction design that meets IE3 energy-efficiency standards. For even more efficiency, an optional variable speed drive (VSD) can help you save up to 35% on energy costs.



## Significantly reduce total cost of ownership



Rotary comparison at 79% average volume capacity; 4000 hours per year; 0.1€/kWh

# The elements of smart design

## INTELLIGENT



**1 Xe-Series intelligent controllers** monitor and adjust system parameters and can email you when operational events occur—so you can take action, accessing the compressor system from any current, common web browser in the world

**2 Progressive Adaptive Control (PAC™)** automatically reacts to key parameters to minimise unexpected downtime

## RELIABLE

**3 Three-stage separation system with conical baffle** removes all but 3 ppm of lubricating oil from delivered air—protecting downstream equipment and extending filter life—to maximise productivity and minimise expenses

**4 Long-life Ingersoll Rand consumables** reduce hard costs, extend maintenance intervals and minimise downtime

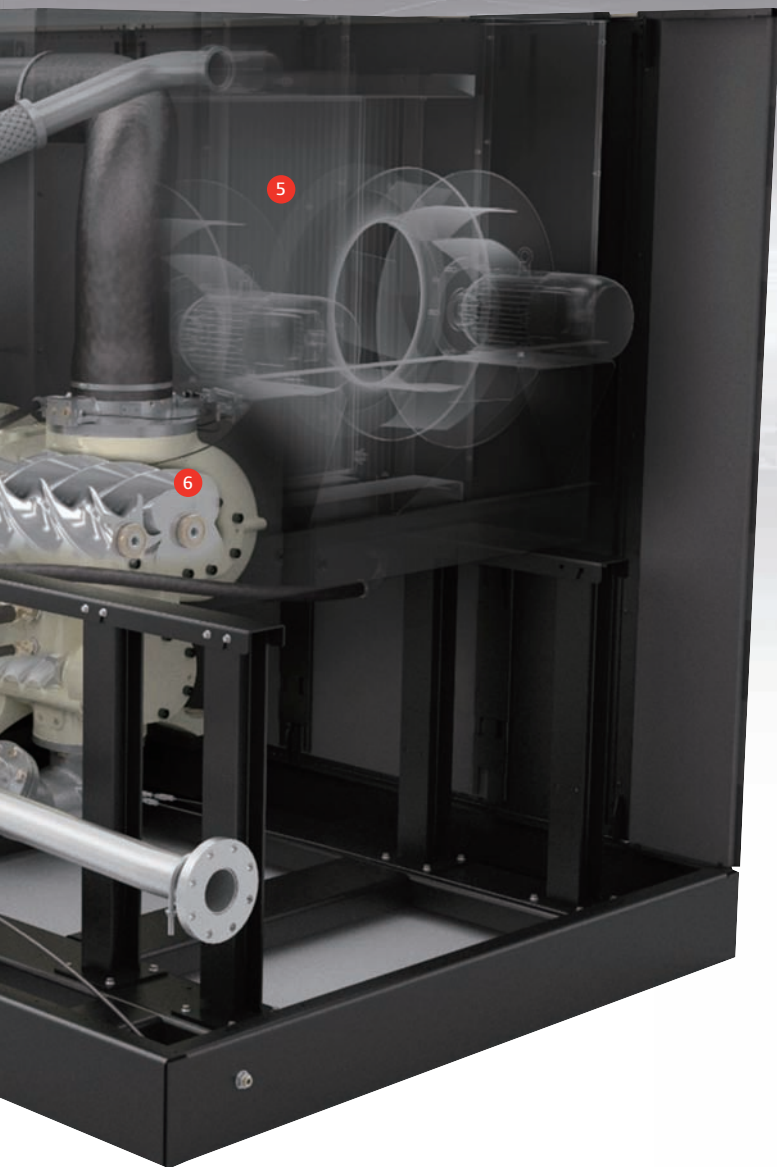
**5 Free-floating cooling system** allows heat exchangers to expand and contract, reducing thermal stress for improved durability



**Electronic, no-loss drain valves** allow condensate draining without the loss of air pressure, saving you money<sup>1</sup>

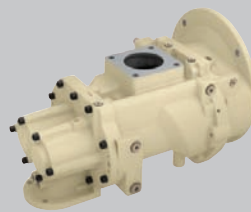
<sup>1</sup>Standard on two-stage and variable speed models, optional on single stage models





**10 Hinged-door service access with integrated handles** provides quick, easy access to all user-maintainable components—including the heat exchangers, which don't require removal during routine cleaning

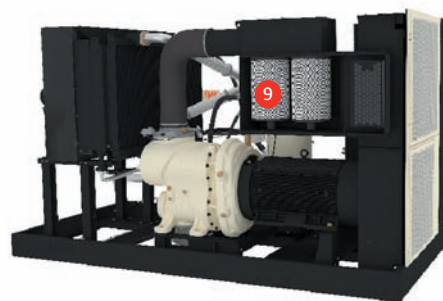
## EFFICIENT



**6 All-new, state-of-the-art airends** available in single stage and two-stage (90 kW and above) improve efficiency as much as 18%, and are designed for long life and reliable operation

**7 V-Shield™ technology** uses a combination of advanced techniques that help deliver repeatable, leak-free connections

**8 IE3-Rated Premium Efficiency** motors deliver even more energy savings than high-efficiency motors, and an available variable speed drive (VSD) helps further decrease energy demands



**9 Two-stage, high-efficiency air filters** deliver exceptional filtration, maintain maximum airflow and provide a visual indicator when changing is required

# The airend—the heart of every compressor



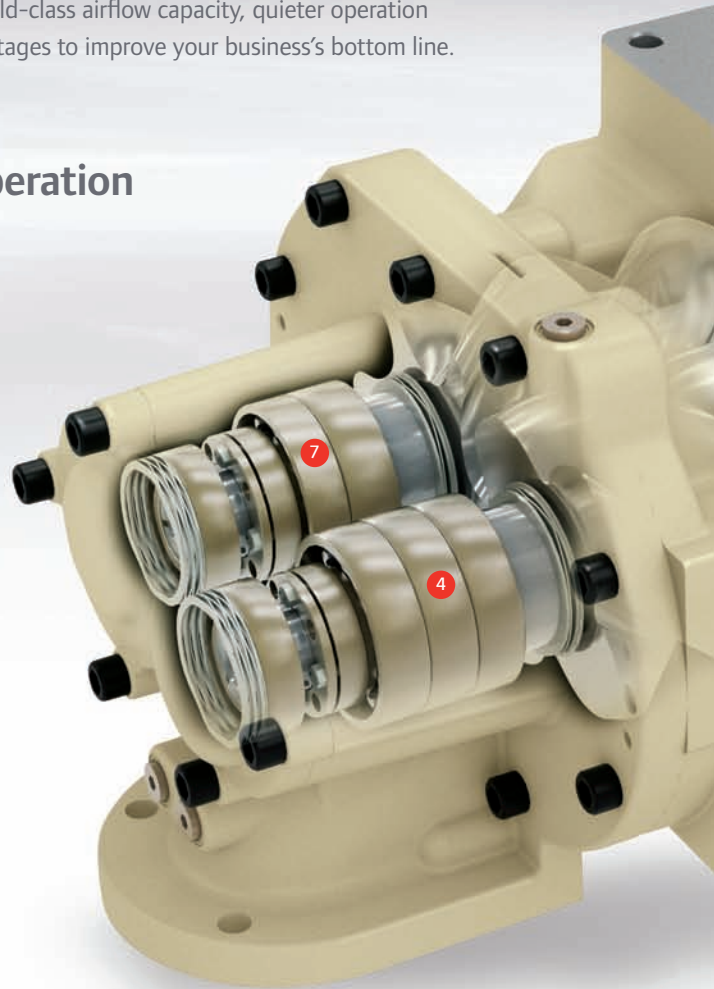
Air compressor use accounts for a significant part of your business's energy costs. Our engineers and design experts used advanced computer modeling techniques to create a superior airend that improves efficiency up to 18%—plus world-class airflow capacity, quieter operation and a longer, more reliable life: multiple advantages to improve your business's bottom line.

## Designed for long life and reliable operation

- 1 **Strategically positioned lubrication points** efficiently deliver oil exactly where it's needed, improving reliability and lowering power consumption
- 2 **Advanced gear design** transmits drive power more efficiently and reliably

### INTEGRAL GEARBOX

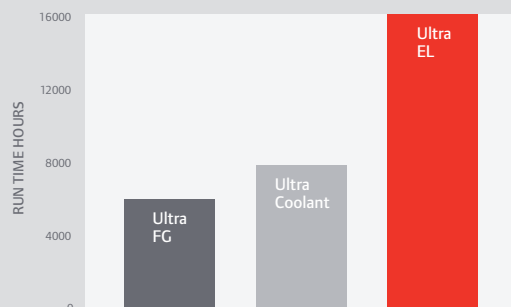
- 3 **Integral gearbox** reduces windage losses and drivetrain length for more efficient performance and easier serviceability
- 4 **Enhanced bearing arrangement** reduces resistance and improves power management for maximum reliability and performance
- 5 **Maintenance-free, sealed drive system** requires no regular service and protects against damaging dirt and moisture

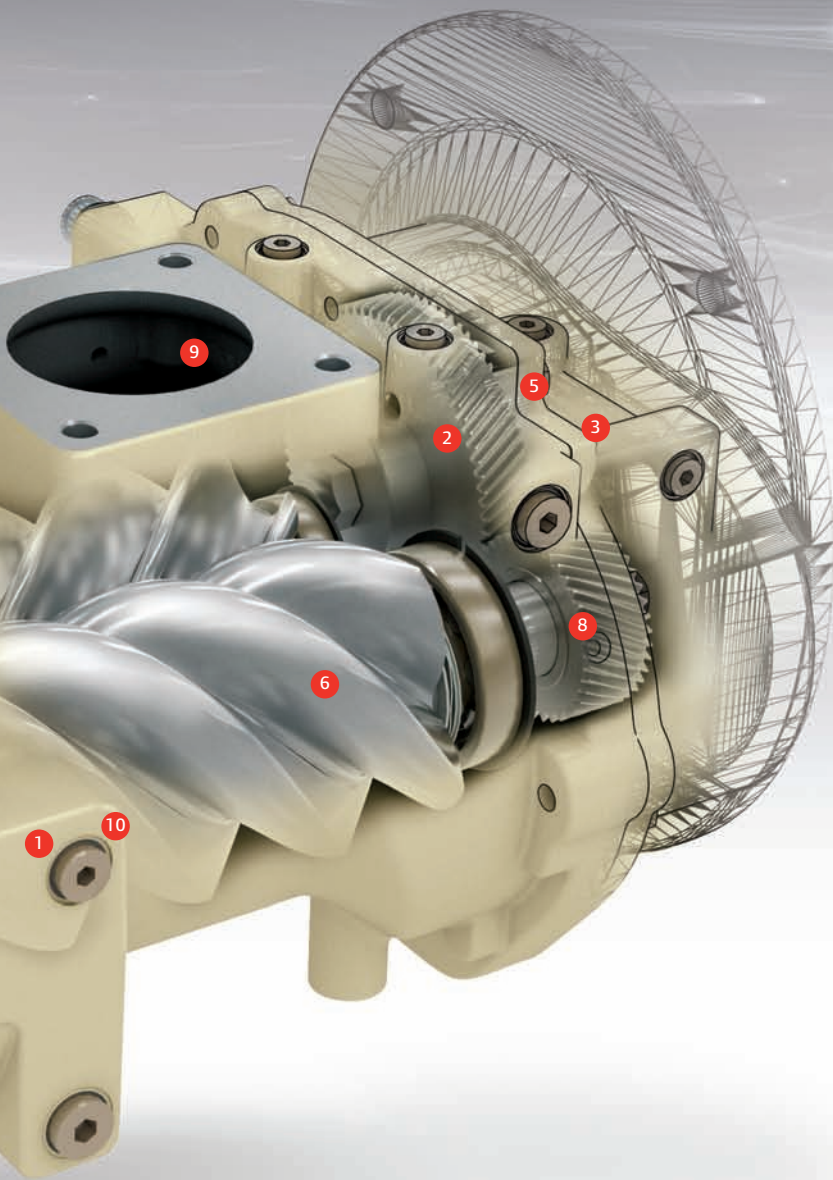


## Maximum change intervals, maximum protection

Get the best of both worlds. Ingersoll Rand filters and lubricating oils provide unsurpassed longevity and protection to keep your

Next Generation R-Series compressor running longer.





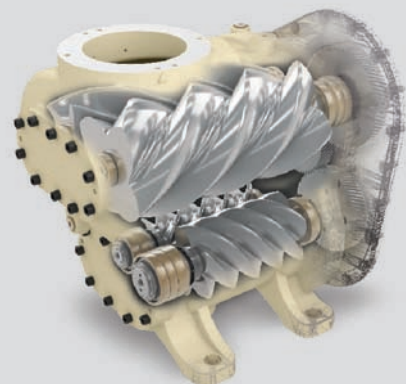
## World-class energy efficiency

### ADVANCED ROTOR PROFILE

- 6 Optimised rotor profile** helps deliver up to 18% increased efficiency and 21% more airflow, reducing energy cost.
- 7 Lower friction bearing arrangements** improve energy efficiency
- 8 Optimised gear lubrication** increases reliability and reduces power consumption through strategically injecting oil into gear mesh
- 9 Streamlined inlet and outlet flow passage** reduces pressure drops
- 10 Optimised oil-injection process** lowers temperature and increases efficiency during compression

## The two-stage advantage

For peak efficiency and reliability at 90 kW and above, choose our two-stage airend. Operating at slow speed along with splitting the pressure ratio into two stages significantly reduces bearing load, extending life. Redesigned from the ground up, the airend includes new state-of-the-art rotor profiles that significantly minimise leakage, as well as angular contact ball bearings and optimised lubricant distribution to achieve significant energy efficiency improvement both at full load operation and over a wider operating range.





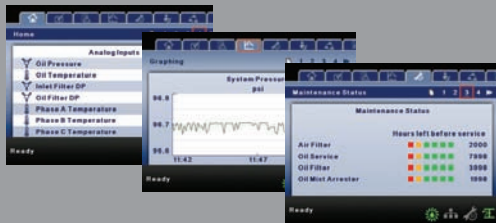
# Reliable air to keep you running

Every component in a Next Generation R-Series compressor system supports maximum reliability—for more productivity, longer equipment life, lower operating costs and higher profitability.

## Progressive Adaptive Control (PAC™)

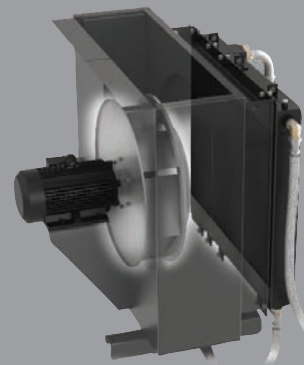
PAC helps you properly maintain your air compressor system by automatically reacting to key parameters to reduce the risk of unexpected downtime.

- Monitors critical performance parameters
- Adjusts system output to address extreme conditions and ensure continued operation without damaging the system—even when certain maintenance operations are overdue



## Free-floating cooling system

Allows heat exchangers to expand and contract, reducing thermal stress for improved system durability.



## V-Shield™ technology

V-Shield™ technology combines superior techniques that deliver repeatable, leak-free connections to maximise efficiency and reduce leak-related problems.

- **Face-seal connections** provide flat, tight, virtually distortion-free joints
- **Fluoroelastomer O-rings** resist chemicals and extreme temperatures for long-term durability
- **Premium metal-flex air hoses** last up to three times longer than conventional hoses, using a braided stainless steel exterior and a PTFE-lined interior to resist chemicals, heat, oxidation, abrasion, pressure and fatigue



- **Vibration isolation system** reduces vibration to increase compressor life and lower noise levels



# The power of intelligence

Xe-Series intelligent controllers optimise operational parameters to ensure maximum productivity. You can stay informed of the system's status and make changes from anywhere in the world.

- **Intuitive, high-resolution colour display** provides easy-to-understand icons and more than 30 available languages to show vital functions at a glance
- **User-intuitive folders** with critical and non-critical parameters and operating characteristics provide deeper insights into your compressor's performance
- **Advanced control algorithms** ensure maximum energy efficiency and reliability—even during periods of moderate workloads
- **Performance analysis/graphical trending** using the Xe-145 intelligent controller to display compressor performance over time in easy-to-understand graphical charts—supporting informed decisions and well-planned maintenance
- **Integral sequencer** coordinates the operation of up to four compressors to precisely meet demand, save energy and minimise wear
- **Real-time clock schedule (option)** lets you program Xe-145 controllers to start/stop the system at specific times to maximise productivity, conserve energy and reduce downtime
- **On-board web pages** feature the same convenient status bar found on the controller interface



## Stay connected virtually anywhere

Whether you're 1 meter or 10,000 kilometers away, Xe-Series controllers keep you connected—so you'll always know the compressor's operating status and can make any necessary changes. Onsite, connect locally through your Distributed Control System (DCS) using Modbus or Ethernet. Remotely, access critical data and controls with any common, current web browser.

# The performance you expect

Advanced solutions that ensure reliable flow—even in extreme operating environments. That's what you expect from Ingersoll Rand. That's what you get from the Next Generation R-Series.

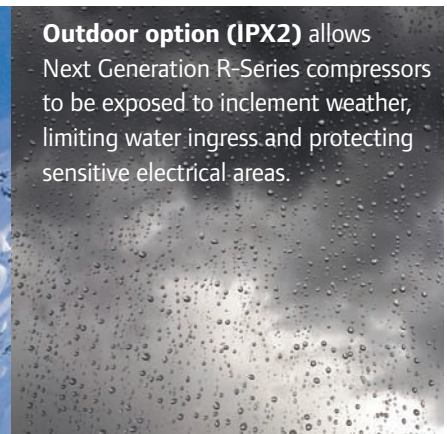
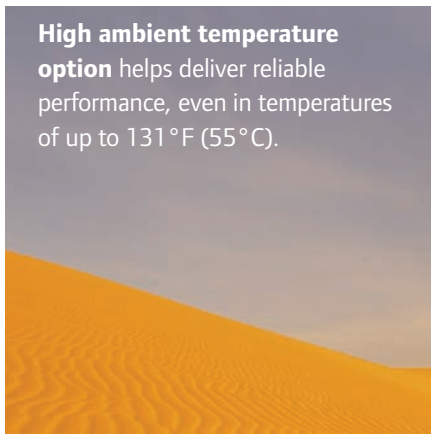
## Built to work in virtually any environment

The Next Generation R-Series features an advanced motor design built to operate at extreme ambient temperatures between 35°F (2°C) and 115°F (46°C). Ambient temperatures that approach or drop below freezing can cause problems for any air compressor. The Xe-Series controller triggers an alert if freezing conditions are detected during startup.

**High ambient temperature option** helps deliver reliable performance, even in temperatures of up to 131°F (55°C).

**Low ambient temperature option** protects the system in freezing conditions with strategically placed heating elements, operating in temperatures as low as -10°F (-23°C)

**Outdoor option (IPX2)** allows Next Generation R-Series compressors to be exposed to inclement weather, limiting water ingress and protecting sensitive electrical areas.



## Space-saving convenience

The compact Total Air System (TAS) package option delivers ISO Class 1-4-1 quality air\*, on models up to 75 kW.

\*Measured at steady state conditions in accordance with ISO 8573-1:2010, with inlet air to package conditions of 77°F (25°C) and RH of 60%.

# 200-250kW (250-350hp) Configuration

Category	Description	i / ie	n / ne
<b>Standard Features</b>			
<b>Airend</b>	Premium performance airend	●	●
<b>Controller</b>	Energy-saving controller easy to operate in over 30 languages	●	●
	Programmable start/stop operation and remote connectivity	●	●
	Built-in optimization sequencer for up to four units	●	●
<b>PAC™ Protection</b>	Scans and adjusts operating parameters in response to filtration changes	●	●
	Real-time electronic maintenance indicators and shutdown protection	●	●
<b>Cooling System</b>	Air-cooled free-floating cooling system optimized for efficiency & serviceability	●	●
	Energy-efficient and low-noise centrifugal blower	●	●
	Free-floating cooling system rated for 115°F (46°C) ambient	●	●
	Moisture separator	●	●
	Electronic no-loss condensate drains	○/●	●
<b>V-Shield™ Technology</b>	Premium stainless steel and PTFE metal-flex hoses	●	●
	Vibration isolation pads	●	●
	Repeatable leak-free connections with superior elastomeric seals	●	●
<b>Auxiliary Systems</b>	Noise attenuation enclosure	●	●
	Package pre-filtration	●	●
	Long-life filtration and separation elements	●	●
	16,000 hour life Ultra EL™ Coolant	●	●
	Flow control by full load/no load regulation system	●	
<b>Motors &amp; Electrical Systems</b>	Control panel protection, NEMA 4	●	
	Control panel protection, NEMA 12		●
	Star-delta reduced voltage starter	●	
	NEMA Premium TEFC IP55 motors – Class F insulation with B rise	●	●
	Space heaters and RTDs	●	●
<b>General Features</b>	Simple ducting (single air inlet and single air outlet)	●	●
	12-month full package warranty	●	●
<b>Optional Features</b>			
<b>Harsh Condition Operation</b>	Outdoor modification/rain protection	○	
	Low ambient temperature protection to 14°F (-10°C)50Hz	○	
	Low ambient temperature protection to -10°F (-23°C)60Hz	○	
	High ambient rating up to 131°F (55°C)	○	
	Premium high dust filtration	○	○
<b>Environmental</b>	Fluid containment system	○	○
	Ultra FG lubricant	○	○
<b>Power Protection</b>	Power outage automatic restart option (PORO)	○	○
	Phase monitor (protection)	○	○
	Electronic solid state reduced voltage starter	○	
<b>General Options</b>	Flow control inlet modulation control	○	
	Comprehensive service and coverage plans	○	○

● Standard feature ○ Optional feature "Blank" Not Available

### **i Ingersoll Rand – 50 Hz Performance**

Model	Max. Pressure bar	Nominal Power kW	Capacity (FAD)* m <sup>3</sup> /min	Dimensions (Length × Width × Height) mm	Weight kg
200i	7.5	200	41.5	3752 × 2150 × 2504	6275
	8.5	200	40.0	3752 × 2150 × 2504	6275
	10.0	200	35.7	3752 × 2150 × 2504	6275
250i	7.5	250	50.2	3752 × 2150 × 2504	6275
	8.5	250	48.1	3752 × 2150 × 2504	6275
	10.0	250	43.0	3752 × 2150 × 2504	6275

### **ie Ingersoll Rand – 50 Hz Performance**

200ie	7.5	200	43.6	4320 × 2150 × 2504	8336
	8.5	200	41.0	4320 × 2150 × 2504	8336
	10.0	200	38.5	4320 × 2150 × 2504	8336
	14.0	200	31.0	4320 × 2150 × 2504	8336
250ie	7.5	250	54.1	4320 × 2150 × 2504	8336
	8.5	250	50.8	4320 × 2150 × 2504	8336
	10.0	250	46.6	4320 × 2150 × 2504	8336
	14.0	250	38.8	4320 × 2150 × 2504	8336

### **n Ingersoll Rand – 50 Hz Performance**

200n	7.0-10.0	200	16.8-41.2	3752 × 2150 × 2504	6275
250n	7.0-10.0	250	16.8-49.2	3752 × 2150 × 2504	6275

### **ne Ingersoll Rand – 50 Hz Performance**

200ne	7.0-10.0	200	18.7-43.7	4320 × 2150 × 2504	8336
250ne	7.0-10.0	250	18.7-53.1	4320 × 2150 × 2504	8336

### **i Ingersoll Rand – 60 Hz Performance**

Model	Max. Pressure psig	Nominal Power hp	Capacity (FAD)* cfm	Dimensions (Length × Width × Height) in	Weight lb
185i	110	250	1,367	148 × 85 × 99	13,834
	125	250	1,310	148 × 85 × 99	13,834
	145	250	1,211	148 × 85 × 99	13,834
220i	110	300	1,642	148 × 85 × 99	13,834
	125	300	1,579	148 × 85 × 99	13,834
	145	300	1,409	148 × 85 × 99	13,834
260i	110	350	1,702	148 × 85 × 99	13,834
	125	350	1,639	148 × 85 × 99	13,834
	145	350	1,519	148 × 85 × 99	13,834

### **ie Ingersoll Rand – 60 Hz Performance**

185ie	110	250	1,444	170 × 85 × 99	18,378
	125	250	1,388	170 × 85 × 99	18,378
	145	250	1,271	170 × 85 × 99	18,378
	200	250	1,063	170 × 85 × 99	18,378
220ie	110	300	1,695	170 × 85 × 99	18,378
	125	300	1,582	170 × 85 × 99	18,378
	145	300	1,483	170 × 85 × 99	18,378
	200	300	1,275	170 × 85 × 99	18,378
260ie	110	350	1,840	170 × 85 × 99	18,378
	125	350	1,780	170 × 85 × 99	18,378
	145	350	1,621	170 × 85 × 99	18,378
	200	350	1,398	170 × 85 × 99	18,378

### **n Ingersoll Rand – 60 Hz Performance**

200n	100-145	200	593-1,460	148 × 85 × 99	13,834
250n	100-145	250	593-1,751	148 × 85 × 99	13,834

### **ne Ingersoll Rand – 60 Hz Performance**

200ne	100-145	200	660-1,546	170 × 85 × 99	18,378
250ne	100-145	250	660-1,890	170 × 85 × 99	18,378

\* FAD (Free Air Delivery) is full package performance including all losses, tested per ISO 1217:2009 Annex C

i 定頻機種 ie 定頻高效率機種  
n 變頻機種 ne 變頻高效率機種  
1 kg=14.2 psig, 1 cmm=35.3 cfm

RS260ie  
110 psig=7.7 kg/cm<sup>2</sup>  
1840 cfm=3126 CMH

RS250ne  
100~145 psig=7~10.2 kg/cm<sup>2</sup>  
660~1890 cfm=1121~3211 CMH



# 宣鑫企業有限公司

台 中 市 神 岡 區 溪 洲 路 3 8 1 巷 3 1 號

TEL: (04)25612699 • FAX: (04)25611699

E - M a i l : [neoair@ms58.hinet.net](mailto:neoair@ms58.hinet.net)



Ingersoll Rand (NYSE:IR) advances the quality of life by creating comfortable, sustainable and efficient environments. Our people and our family of brands—including Club Car®, Ingersoll Rand®, Thermo King® and Trane®—work together to enhance the quality and comfort of air in homes and buildings; transport and protect food and perishables; and increase industrial productivity and efficiency. We are a \$13 billion global business committed to a world of sustainable progress and enduring results.



[IngersollRandProducts.com](http://IngersollRandProducts.com)



Member of Pneurop



Ingersoll Rand, IR, the IR logo, PAC, PackageCARE and V-Shield are trademarks of Ingersoll Rand, its subsidiaries and/or affiliates. All other trademarks are the property of their respective owners.

Ingersoll Rand compressors are not designed, intended or approved for breathing air applications. Ingersoll Rand does not approve specialised equipment for breathing air applications and assumes no responsibility or liability for compressors used for breathing air service.

Nothing contained on these pages is intended to extend any warranty or representation, expressed or implied, regarding the product described herein.

Any such warranties or other terms and conditions of sale of products shall be in accordance with Ingersoll Rand's standard terms and conditions of sale for such products, which are available upon request.

Product improvement is a continuing goal at Ingersoll Rand. Designs and specifications are subject to change without notice or obligation.