



YUHKEE



www.YUHKEE.com.tw



YUHKEE

www.YUHKEE.com.tw

裕可筒夾 — 精 準 穩
咬夾能力 — 所向無敵
量產、客製化 — 一應俱全

YUHKEE Collet Chuck — Precision, Accuracy, Stable
Ability of Grasp — Powerful
Mass production, Customization — Can Correspond





公司簡介

自1994年起，裕可公司以專業的製造團隊和堅強的研發實力，至今累積了多年的精密筒夾製造經驗，開發設計技術超群，廠內全自動化機械設備，配合精準的檢驗儀器，提供給您最高品質的筒夾—精、準、穩，以謙卑的服務態度為客戶解決技術性的相關問題，共同為精密工業領域提高生產力，降低不良率，強化競爭力創造雙贏的局勢。

裕可公司主要生產：ER筒夾、SK高速筒夾、DC後拉精密筒夾、PCB高速鑽頭夾、氣動工具筒夾、電動工具筒夾，從量產到客製化的特殊筒夾，裕可皆盡己之力滿足客戶的需求，堅守品質。這是長期以來的願景，也是我們永續經營的目標。顧客的信賴是我們的榮耀，您的肯定讓我們更加自信。

Company Profile

Since 1994, YUHKEE company have the outstanding manufacturing team and a strong R & D strength, till now, has accumulated experience of many years in the manufacture of precision collet chucks, and it is conspicuous on design technology of the development, the factory have fully automation equipment and machinery, products are measured by accurate testing equipment, we can provide to you highest quality collet - precision, accuracy, stable, we will improve productivity in the precision industry sector with a humble service attitude for customers to provide technical solutions, and try to decrease our defective rate, strengthen the competitiveness for make a win-win with customers.

The company mainly produces is ER collet, SK high-speed collet, DC Draw back precision collet, PCB high-speed Drill collet, pneumatic tool collet, electric tool collet etc. YUH KEE will do the best and satisfy customer needs, keep good quality even mass production or customization to special collet. This is our long-term vision, and we are sustainable management's target. The customer's trust is our glory, your affirmation make us be more confident.



YUHKEE

www.YUHKEE.com.tw

当社 (YUH KEE社) のコレットは安定した高精度、高品質を誇ります。

把握力は業界最高レベルと自負しております。

大量生産品の他、お客様仕様の特別品にも対応しております。

YUHKEE 콜렛 ((주) YUHKEE콜렛) — 정밀, 정확, 안정

파지력 — 천하무적 (업계최고라고자부합니다.)

대량생산, 고객맞춤 — 모두완비





会社紹介

当社 (YUH KEE社) は、1994年の創業より、研究開発、製造部門を持ちコレットの専門メーカーとして技術を蓄積して参りました。自社工場には、自動化された生産設備の他に品質検査設備も導入して最高品質のコレットをお客様に提供できる体制を整えております。今後も、お客様の利益に貢献できるように、尚一層の技術向上を目指して企業努力を続けて行きます。

当社 (YUH KEE社) は、ER、SKコレットはもとより、電動工具やエア工具のコレットなどを主な生産品目としておりますが、特殊品にも注力しており、全ての製品に対して当社の検査を実施して顧客満足度を高める努力をしております。お客様の信頼を得る事が、当社の最大の名誉であり、当社の製品がお客様の会社の利益に寄与できる事を望んでおります。

회사소개

1994년이래, YuhKee는 전문적인 제조능력을 갖춘 팀과 지속적인 연구, 개발능력을 통해, (오늘날) 다년간의 정밀 콜렛 제조 경험, 발군의 개발 디자인 기술을 축적하게 되었습니다. 자사 공장은 100% 자동화 기계 설비 및 정밀한 테스트 설비를 갖추고, 고객 여러분께 최고 품질의 콜렛을 제공합니다. 정밀, 정확, 안정 (의의념을 가지고) 겸손한 (고객) 서비스 의 자세로 고객의 기술적인 문제를 해결해드리며, (고객과) 함께 정밀 산업 분야의 생산성 향상, 수율 향상, 경쟁력 강화를 위해 윈-윈(win-win) 할 수 있도록 힘쓰겠습니다.

(주) YuhKee은 ER 콜렛, SK 고속콜렛, DC 정밀콜렛, PCB 고속드릴척, 공압공구콜렛, 전동공구콜렛등을 주로 생산하고 있으며, 대량 생산에서부터 고객 맞춤형 특수콜렛에 이르기까지 자사에서는 고객 만족을 위해서 최선을 다하고, 최고의 품질을 고수하고 있습니다. 이는 오랜 기간에 걸친 (주) YuhKee의 비전이고, 자사의 지속 가능한 발전을 위한 목표이기도 합니다. 고객의 신뢰가 자사의 명예이며, 귀하의 인정이 저희에게는 더 큰 힘을 줍니다.



索引

| | | | |
|--------------|----|-------------------------|----|
| ER 筒夾系列 | 01 | 鑽頭研磨機筒夾系列 | 08 |
| SK 筒夾系列 | 02 | 磨刀機筒夾系列 | 10 |
| NBC 筒夾系列 | 03 | 多軸筒夾系列 — C 鑽頭筒夾、CT 攻牙筒夾 | 11 |
| DC 後拉筒夾系列 | 04 | PCB 高速鑽孔筒夾系列 | 12 |
| UC 後拉筒夾系列 | 05 | 氣動筒夾系列 | 16 |
| C 直筒夾系列 | 06 | 電動筒夾系列 | 19 |
| CS 微調式塘孔套筒系列 | 07 | | |

INDEX

| | | | |
|---|----|--|----|
| ER Collet Series | 01 | Drill Grinder Machine Collet Chuck Series | 08 |
| SK Collet Series | 02 | Grinding Machine Collet Chuck Series | 10 |
| NBC Collet Chuck Series | 03 | Multi-axis Collet Series - C Drill Collet Chuck, | 11 |
| DC Collet Chuck Series | 04 | CT Tapping Collet Chuck | |
| UC Collet Chuck Series | 05 | PCB High - Speed Drilling Collet Chuck Series | 12 |
| C Straight Collet Chuck Series | 06 | Pneumatic Collet Chuck Series | 16 |
| CS Fine-Tuning Boring Machine Collect Chuck Series | 07 | Electric Tool Collet Chuck Series | 19 |

当社の製品紹介

| | | | |
|-----------------|----|---------------------------------|----|
| ER コレット | 01 | ドリル研磨機コレット | 08 |
| SK コレット | 02 | グラインダーコレット | 10 |
| NBC コレット | 03 | 多軸コレット — C ドリルコレット、CT タッピングコレット | 11 |
| DC コレット | 04 | PCB 高速ドリルコレット | 12 |
| UC コレット | 05 | 気動コレット | 16 |
| C ストレートコレット | 06 | 電動コレット | 19 |
| CS 微調整ボーリングコレット | 07 | | |

색인

| | | | |
|---------------|----|----------------------------|----|
| ER 콜렛시리즈 | 01 | 드릴그라운드콜렛시리즈 | 08 |
| SK 콜렛시리즈 | 02 | 그라인더콜렛시리즈 | 10 |
| NBC 콜렛시리즈 | 03 | 다중축콜렛시리즈 — C 드릴콜렛、CT 테이퍼콜렛 | 11 |
| DC 콜렛시리즈 | 04 | PCB 고속드릴링콜렛시리즈 | 12 |
| UC 콜렛시리즈 | 05 | 공압콜렛시리즈 | 16 |
| C 스트레이트콜렛 | 06 | 전동콜렛시리즈 | 19 |
| CS 미세조정홀투관시리즈 | 07 | | |



YUHKEE



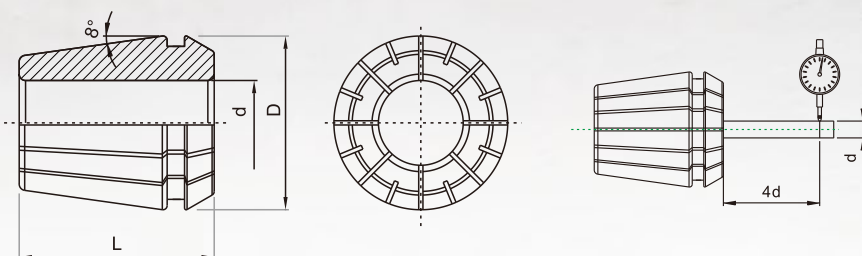
C O L L E T

Made In **TAIWAN**

ER

ER
筒夾系列

ER 筒夾系列 / ER Collet Series / ER コレット / ER 콜렛시리즈
ER-11 / ER-16 / ER-20 / ER-25 / ER-32 / ER-40



| Collet Class | Runout |
|--------------|----------|
| A | 0.01 mm |
| AA | 0.005 mm |

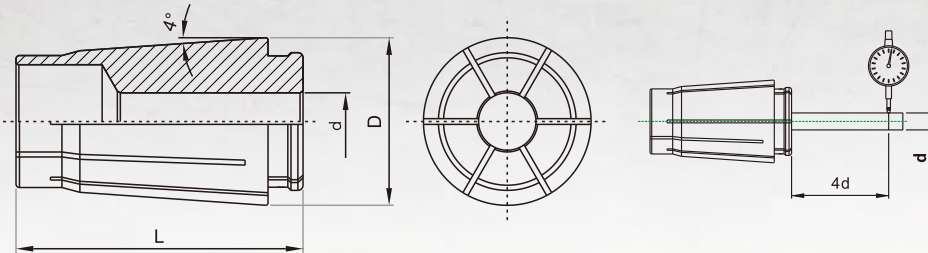
| MODEL NO. | d | D | L |
|-----------|--|------|------|
| ER-11 | 1, 1.5, 2, 2.5, 3, 3.175, 3.5, 4, 4.5, 5, 5.5, 6, 6.5, 7 | 11.5 | 18.0 |
| ER-16 | 1, 1.5, 2, 2.5, 3, 3.175, 3.5, 4, 4.5, 5, 5.5, 6, 6.5, 7, 7.5, 8, 8.5, 9, 9.5, 10 | 17.0 | 27.0 |
| ER-20 | 1, 1.5, 2, 2.5, 3, 3.175, 3.5, 4, 4.5, 5, 5.5, 6, 6.5, 7, 7.5, 8, 8.5, 9, 9.5, 10, 10.5, 11, 11.5, 12, 12.5, 13, 13.5, 14, 15, 16 | 21.0 | 31.0 |
| ER-25 | 1, 1.5, 2, 2.5, 3, 3.175, 3.5, 4, 4.5, 5, 5.5, 6, 6.5, 7, 7.5, 8, 8.5, 9, 9.5, 10, 10.5, 11, 11.5, 12, 12.5, 13, 13.5, 14, 15, 16, 16.5, 17, 17.5, 18, 18.5, 19, 19.5, 20 | 26.0 | 34.0 |
| ER-32 | 2, 2.5, 3, 3.5, 4, 4.5, 5, 5.5, 6, 6.5, 7, 7.5, 8, 8.5, 9, 9.5, 10, 10.5, 11, 11.5, 12, 12.5, 13, 13.5, 14, 14.5, 15, 15.5, 16, 16.5, 17, 17.5, 18, 18.5, 19, 19.5, 20, 20.5 | 33.0 | 40.0 |
| ER-40 | 2, 2.5, 3, 3.5, 4, 4.5, 5, 5.5, 6, 6.5, 7, 7.5, 8, 8.5, 9, 9.5, 10, 10.5, 11, 11.5, 12, 12.5, 13, 13.5, 14, 14.5, 15, 15.5, 16, 16.5, 17, 17.5, 18, 18.5, 19, 19.5, 20, 20.5, 21, 21.5, 22, 22.5, 23, 23.5, 24, 24.5, 25, 25.5, 26, 26.5, 27, 27.5, 28, 28.5, 29, 30, 31, 32 | 41.0 | 46.0 |

SK

SK
筒夾系列



SK 筒夾系列 / SK Collet Series / SK 코렛 / SK 콜렛시리즈
SK-6 / SK-10 / SK-13 / SK-16 / SK-20 / SK-25



| Collet Class | Runout |
|---|------------|
| A | 0.01 mm |
| AA | 0.005 mm |
|  | < 0.003 mm |

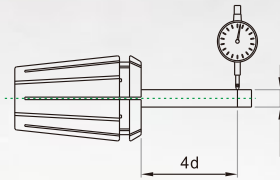
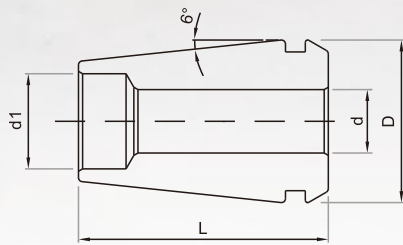
| MODEL NO. | d | D | L |
|-----------|---|------|------|
| SK-6 | 2, 2.5, 3, 4, 5, 6 | 11.0 | 25.0 |
| SK-10 | 2, 2.5, 3, 3.175, 3.5, 4, 4.5, 5, 5.5, 6, 6.5, 7, 7.5, 8, 8.5, 9, 9.5, 10 | 16.0 | 30.5 |
| SK-13 | 2, 3, 3.175, 4, 5, 6, 7, 8, 9, 10, 12, 13 | 20.0 | 39.0 |
| SK-16 | 2, 2.5, 3, 3.175, 3.5, 4, 4.5, 5, 5.5, 6, 6.5, 7, 7.5, 8, 8.5, 9, 9.5, 10, 10.5, 11, 11.5, 12, 12.5, 13, 13.5, 14, 14.5, 15, 15.5, 16 | 25.0 | 45.0 |
| SK-20 | 3, 4, 6, 8, 10, 12, 14, 16, 18, 20 | 30.0 | 50.0 |
| SK-25 | 4, 6, 8, 10, 12, 14, 16, 18, 20, 25 | 36.0 | 57.0 |

NBC



NBC
筒夾系列

NBC 筒夾系列 / NBC Collet Chuck Series / NBC コレット / NBC 콜렛시리즈
NBC8 / NBC10 / NBC13 / NBC16 / NBC20



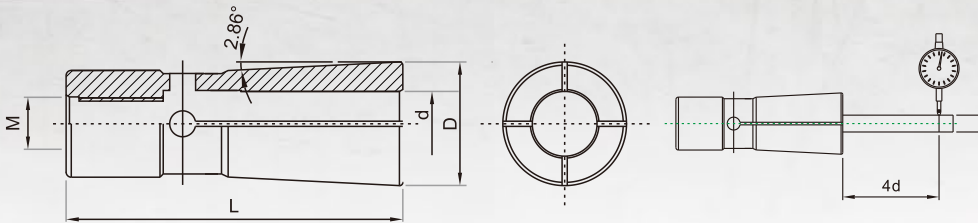
| Collet Class | Runout |
|---|------------|
| A | 0.01 mm |
| AA | 0.005 mm |
|  | < 0.003 mm |

| MODEL NO. | D | d | d1 | L | MODEL NO. | D | d | d1 | L |
|-----------|------|------|------|------|-----------|-------|------|------|------|
| NBC8 | 4.0 | 12.5 | 4.0 | 7.7 | NBC16 | 4.0 | 25.5 | 4.0 | 15.0 |
| | 6.0 | 12.5 | 6.0 | 7.7 | | 6.0 | 25.5 | 6.0 | 15.0 |
| | 8.0 | 12.5 | 8.0 | 8.0 | | 8.0 | 25.5 | 8.0 | 15.0 |
| NBC10 | 4.0 | 16.5 | 4.0 | 9.5 | | 10.0 | 25.5 | 10.0 | 15.0 |
| | 6.0 | 16.5 | 6.0 | 9.5 | | 12.0 | 25.5 | 12.0 | 15.0 |
| | 8.0 | 16.5 | 8.0 | 9.5 | | 16.0 | 25.5 | 16.0 | 16.0 |
| | 10.0 | 16.5 | 10.0 | 10.0 | | NBC20 | 4.0 | 28.4 | 4.0 |
| NBC13 | 4.0 | 20.5 | 4.0 | 12.0 | 6.0 | | 28.4 | 6.0 | 18.2 |
| | 6.0 | 20.5 | 6.0 | 12.0 | 8.0 | | 28.4 | 8.0 | 18.2 |
| | 8.0 | 20.5 | 8.0 | 12.0 | 10.0 | | 28.4 | 10.0 | 18.2 |
| | 10.0 | 20.5 | 10.0 | 12.0 | 12.0 | | 28.4 | 12.0 | 18.2 |
| | 12.0 | 20.5 | 12.0 | 12.0 | 16.0 | | 28.4 | 16.0 | 18.2 |
| | | | | | 20.0 | | 28.4 | 20.0 | 20.2 |

DC



DC 後拉筒夾系列 / DC Chuck Collet Series / DC コレット / DC 콜릿시리즈
DC-4 / DC-6 / DC-8 / DC-10 / DC-12



| Collet Class | Runout |
|---|------------|
| A | 0.01 mm |
| AA | 0.005 mm |
|  | < 0.003 mm |

| MODEL NO. | d | D | L | M |
|-----------|----------------------|------|------|-----------|
| DC-4 | 2, 2.5, 3, 4 | 7.0 | 31.0 | M4 P=0.7 |
| DC-6 | 2, 3, 3.175, 4, 5, 6 | 9.6 | 36.0 | M5 P=0.8 |
| DC-8 | 3, 4, 6, 8, 10 | 15.0 | 45.0 | M6 P=1.0 |
| DC-10 | 3, 4, 6, 8, 10 | 19.0 | 52.0 | M8 P=1.25 |
| DC-12 | 3, 4, 6, 8, 10, 12 | 22.0 | 60.0 | M10 P=1.5 |

UC

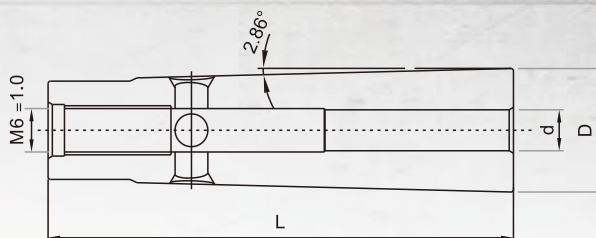
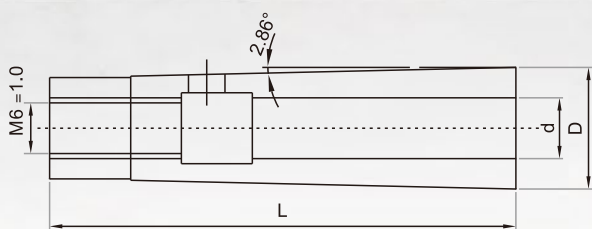


UC
後拉筒夾系列

UC 後拉筒夾系列 / UC Chuck Collet Series / UC コレット / UC 콜릿시리즈

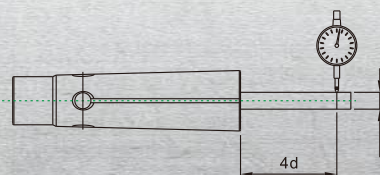
UC8

UC10



| MODEL NO. | D | d | L | M |
|-----------|-----|------|-----|----------|
| UC8 | 4.0 | 12.0 | 4.0 | M6 P=1.0 |
| | 6.0 | 12.0 | 6.0 | M6 P=1.0 |
| | 8.0 | 12.0 | 8.0 | M6 P=1.0 |

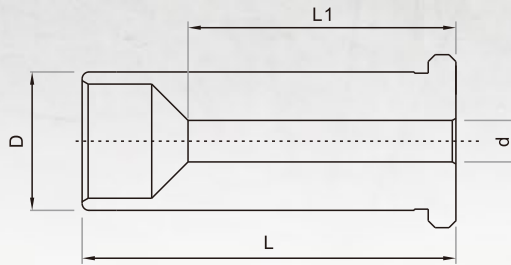
| MODEL NO. | D | d | L | M |
|-----------|------|------|------|----------|
| UC10 | 3.0 | 15.0 | 3.0 | M6 P=1.0 |
| | 4.0 | 15.0 | 4.0 | M6 P=1.0 |
| | 6.0 | 15.0 | 6.0 | M6 P=1.0 |
| | 8.0 | 15.0 | 8.0 | M6 P=1.0 |
| | 10.0 | 15.0 | 10.0 | M6 P=1.0 |



| Collet Class | Runout |
|--------------|------------|
| AA | 0.005 mm |
| ok | < 0.003 mm |



C 直筒夾系列 / C Straight Collet Chuck Series / C 스트레이트콜렛 / C 스트레이트콜렛
C20 **C32**



| MODEL NO. | d | D | L1 | L | MODEL NO. | d | D | L1 | L | |
|-----------|------|------|------|------|-----------|------|------|------|------|------|
| C20 | 3.0 | 3.0 | 20.0 | 28.0 | C32 | 5.0 | 5.0 | 32.0 | 28.0 | 64.0 |
| | 4.0 | 4.0 | 20.0 | 28.0 | | 6.0 | 6.0 | 32.0 | 36.0 | 64.0 |
| | 5.0 | 5.0 | 20.0 | 28.0 | | 7.0 | 7.0 | 32.0 | 37.0 | 64.0 |
| | 6.0 | 6.0 | 20.0 | 36.0 | | 8.0 | 8.0 | 32.0 | 37.0 | 64.0 |
| | 7.0 | 7.0 | 20.0 | 38.0 | | 9.0 | 9.0 | 32.0 | 37.0 | 64.0 |
| | 8.0 | 8.0 | 20.0 | 38.0 | | 10.0 | 10.0 | 32.0 | 40.0 | 64.0 |
| | 9.0 | 9.0 | 20.0 | 38.0 | | 11.0 | 11.0 | 32.0 | 40.0 | 64.0 |
| | 10.0 | 10.0 | 20.0 | 40.0 | | 12.0 | 12.0 | 32.0 | 45.0 | 64.0 |
| | 11.0 | 11.0 | 20.0 | 40.0 | | 13.0 | 13.0 | 32.0 | 45.0 | 64.0 |
| | 12.0 | 12.0 | 20.0 | 45.0 | | 14.0 | 14.0 | 32.0 | 46.0 | 64.0 |
| | 13.0 | 13.0 | 20.0 | 45.0 | | 16.0 | 16.0 | 32.0 | 48.0 | 64.0 |
| | 14.0 | 14.0 | 20.0 | 45.0 | | 18.0 | 18.0 | 32.0 | 49.0 | 64.0 |
| | 15.0 | 15.0 | 20.0 | 46.0 | | 19.0 | 19.0 | 32.0 | 49.0 | 64.0 |
| | 16.0 | 16.0 | 20.0 | 48.0 | | 20.0 | 20.0 | 32.0 | 50.0 | 64.0 |
| | | | | | 25.0 | 25.0 | 32.0 | 56.0 | 64.0 | |

- 銑刀柄插入筒夾內長度需達【L1】長度以上，以發揮最佳效果。
 Milling cutter is inserted into the collet length should be 【L1】 length or more to play the best results.
 콜렛의 충분한把握力は、【L1】以上の長さを挿入頂ければ得られます。
 커터날의콜렛내에삽입길이는 【L1】 이상이어야만, 최적의효과를거둘수있습니다.

CS



**錫鋼刀柄
專用套筒**

Tungsten steel handle special sleeve.

ンガロンホルダーの専用チャック

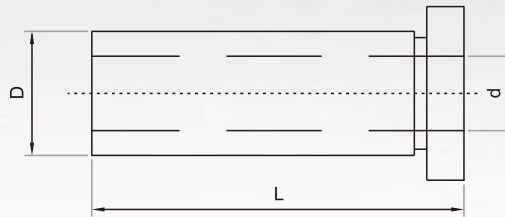
볼프람강커터날전용투관

CS
微調式塘孔套筒系列

CS 微調式塘孔套筒系列 / CS Fine-Tuning Boring Machine Collect Chuck Series / CS 微調整ボーリングコレット / CS 미세조정홀투관시리즈

CS-12 錫鋼刀柄專用套筒

CS-16 錫鋼刀柄專用套筒



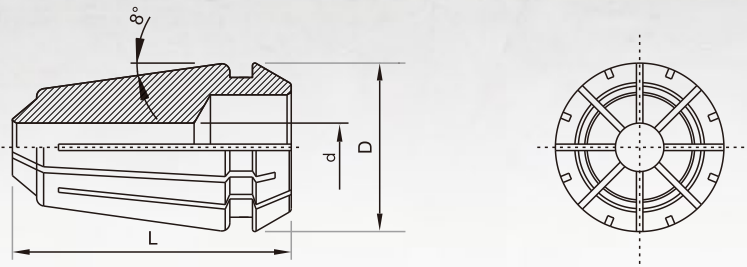
| MODEL NO. | | D | d | L |
|-----------|------|------|------|------|
| CS-12 | 4.0 | 12.0 | 4.0 | 35.0 |
| | 5.0 | 12.0 | 5.0 | 35.0 |
| | 6.0 | 12.0 | 6.0 | 35.0 |
| | 8.0 | 12.0 | 8.0 | 35.0 |
| | 10.0 | 12.0 | 10.0 | 35.0 |

| MODEL NO. | | D | d | L |
|-----------|------|------|------|------|
| CS-16 | 5.0 | 16.0 | 5.0 | 37.0 |
| | 6.0 | 16.0 | 6.0 | 37.0 |
| | 8.0 | 16.0 | 8.0 | 37.0 |
| | 10.0 | 16.0 | 10.0 | 37.0 |
| | 12.0 | 16.0 | 12.0 | 37.0 |
| | 14.0 | 16.0 | 14.0 | 37.0 |

ER BL



鑽頭研磨機筒夾系列 / Drill Grinder Machine Collet Chuck Series / ドリル研磨機コレット / 드릴그라운드콜릿시리즈
 ER-20BL / ER-20BL-SG (粉末冶金鑽頭刀刃專用) It is dedicated for Drill blade of Powder metallurgy. / 夕粉末冶金ドリルホルダー専用 / 분말야금드릴커팀터전용



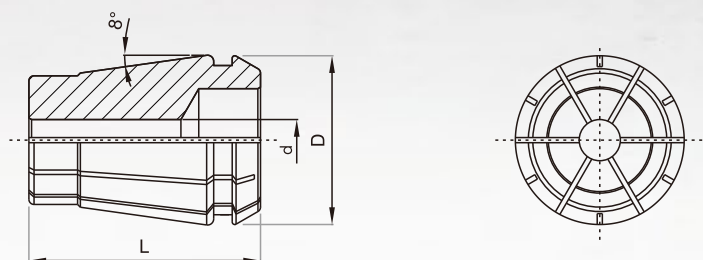
| MODEL NO. | d | D | L |
|------------|--|------|------|
| ER-20BL | 1, 1.5, 2, 2.5 | 21.0 | 39.0 |
| | 2, 2.5, 3, 3.5, 4, 4.5, 5, 5.5, 6 | 21.0 | 34.5 |
| ER-20BL-SG | 1, 1.5 | 21.0 | 38.0 |
| | 2, 2.5, 3, 3.5, 4, 4.5 | 21.0 | 35.0 |
| | 5, 5.5, 6 | 21.0 | 33.0 |
| | 6.5, 7.5, 8, 8.5, 9, 9.5, 10, 10.5, 11, 11.5, 12, 12.5, 13 | 21.0 | 31.0 |

ER 32 BL



鑽頭研磨機筒夾系列

ER-32BL



| MODEL NO. | d | D | L |
|-----------|---|------|------|
| ER-32BL | 8 , 9 , 10 , 11 , 12 , 13 , 14 , 15 , 16 , 17 , 18 , 19 , 20 , 21 , 22 , 23 | 33.0 | 45.0 |
| | 24 , 25 , 25.4 | 33.0 | 40.0 |
| | 26 | 33.0 | 38.0 |

U2



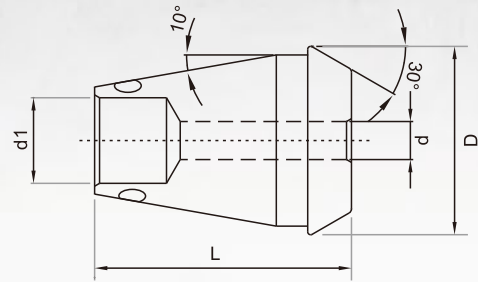
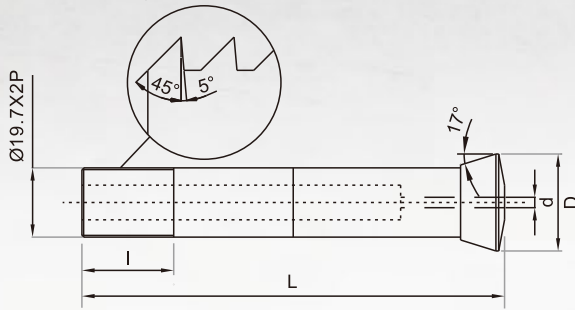
EM



磨刀機筒夾系列 / Drill Grinder Machine Collet Chuck Series / ドリル研磨機コレット / 드릴그라운드콜렛시리즈

U2 磨刀機筒夾 / Grinding Machine Collet Chuck
/ 工具研磨機用코렛 / 그라인더(연삭기) 콜렛

EM-18 雕刻機筒夾 / Engraving Machine Collet Chuck
/ 彫刻機用코렛 / 조각기콜렛



| MODEL NO. | D | d | l | L |
|-------------|------|------|------|-----|
| U2 磨刀機筒夾 | 3.0 | 28.0 | 3.0 | 122 |
| | 4.0 | 28.0 | 4.0 | 122 |
| | 5.0 | 28.0 | 5.0 | 122 |
| | 6.0 | 28.0 | 6.0 | 122 |
| | 8.0 | 28.0 | 8.0 | 122 |
| | 10.0 | 28.0 | 10.0 | 122 |

| MODEL NO. | D | d | l | L |
|----------------|------|------|------|------|
| EM-18 雕刻機筒夾 | 3.0 | 19.8 | 3.0 | 27.0 |
| | 4.0 | 19.8 | 4.0 | 27.0 |
| | 6.0 | 19.8 | 6.0 | 27.0 |
| | 8.0 | 19.8 | 8.0 | 27.0 |
| | 10.0 | 19.8 | 10.0 | 27.0 |

CT



多軸筒夾系列 — C 鑽頭筒夾、CT 攻牙筒夾

多軸筒夾系列 / Multi-axis Collet Series / 多軸コレット / 다중축콜릿시리즈

C 鑽頭筒夾 / C Drill Collet Chuck
/ Cドリルコレット / C드릴콜릿

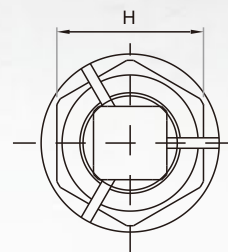
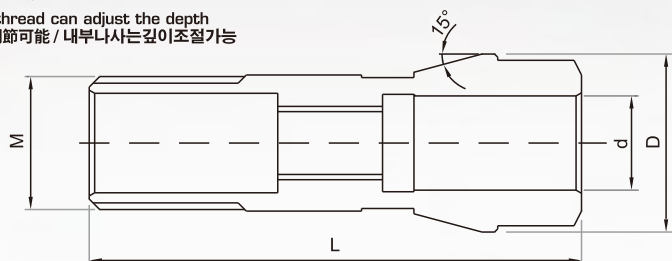
(如屬圓棒、立銑刀須標明)
/ In the case of a round bar, the end mill shall be marked
/ 円形バーの場合には、エンドミル明記要望 / 원형바의 경우, 엔드밀명기요망

CT 攻牙筒夾

(絲攻筒夾專用)
/ It is dedicated for tapping collet chuck
/ タッピング専用コレット / 와이어태이핑콜릿전용

CS 鑽頭筒夾 / CS Drill Collet Chuck
/ CSドリルコレット / CS드릴콜릿

(內付牙可調整深度)
/ Build in screw thread can adjust the depth
/ 内部ねじは深さ調節可能 / 내부나사는깊이조절가능



| MODEL NO. | d | D | L | H | M | |
|-----------|-------|------|------|------|------|--------------|
| C 鑽頭筒夾 | C-4 | 2~4 | 8.2 | 24.0 | 6.0 | 1/4"~28 UNF |
| | C-5 | 2~5 | 10.8 | 31.5 | 8.5 | 5/16"~24 UNF |
| | C-6 | 2~6 | 13.1 | 36.0 | 10.0 | 3/8"~24 UNF |
| | C-9 | 2~9 | 17.0 | 46.0 | 14.0 | 1/2"~20 UNF |
| | C-12 | 2~12 | 21.0 | 50.0 | 17.0 | 5/8"~18 UNF |
| | C-14 | 2~14 | 24.5 | 54.0 | 21.0 | 3/4"~16 UNF |
| | C-16 | 2~16 | 31.0 | 70.0 | 26.0 | M24 P=2 |
| CT 攻牙筒夾 | CT-4 | 3~4 | 8.3 | 24.0 | 6.0 | 1/4"~28 UNF |
| | CT-5 | 3~5 | 10.8 | 31.5 | 8.0 | 5/16"~24 UNF |
| | CT-6 | 3~6 | 13.1 | 36.0 | 10.0 | 3/8"~24 UNF |
| | CT-9 | 3~7 | 17.0 | 46.0 | 14.0 | 1/2"~20 UNF |
| | CT-12 | 3~9 | 21.0 | 50.0 | 17.0 | 5/8"~18 UNF |
| | CT-14 | 3~12 | 24.5 | 54.0 | 21.0 | 3/4"~16 UNF |
| | CT-16 | 3~14 | 31.0 | 70.0 | 26.0 | M24 P=2 |

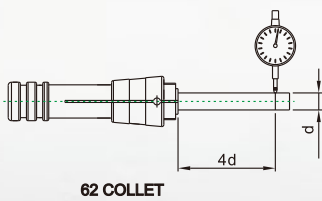
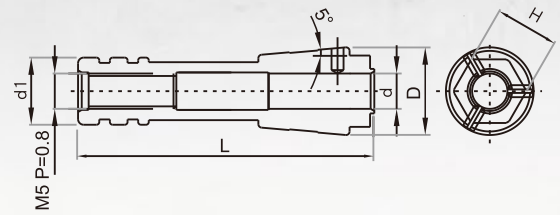
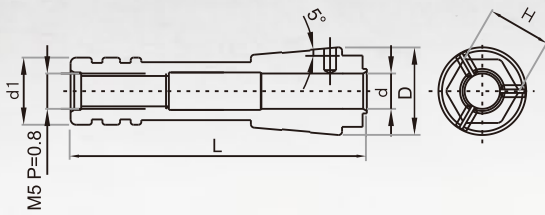
PCB 62

72

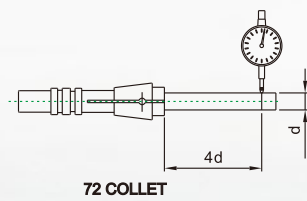


PCB 高速鑽孔筒夾系列 / PCB High-Speed Drilling Collet Chuck Series / PCB 高速ドリルコレット / PCB 고속드릴링콜렛시리즈

62 筒夾 72 筒夾



| Collet Class | Runout |
|--------------|----------|
| A | 0.01 mm |
| AA | 0.005 mm |



| Collet Class | Runout |
|--------------|----------|
| A | 0.01 mm |
| AA | 0.005 mm |

| MODEL NO. | H | D | d | d1 | L | |
|-----------|-------|-----|------|-------|-----|------|
| 62 筒夾 | 3.0 | 9.0 | 12.4 | 3.0 | 9.5 | 41.9 |
| | 3.175 | 9.0 | 12.4 | 3.175 | 9.5 | 41.9 |
| | 4.0 | 9.0 | 12.4 | 4.0 | 9.5 | 41.9 |
| | 5.0 | 9.0 | 12.4 | 5.0 | 9.5 | 41.9 |
| | 6.0 | 9.0 | 12.4 | 6.0 | 9.5 | 41.9 |

| MODEL NO. | H | D | d | d1 | L | |
|-----------|-------|-----|-------|-------|-----|------|
| 72 筒夾 | 3.175 | 9.0 | 11.09 | 3.175 | 9.5 | 32.0 |

73



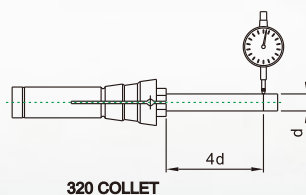
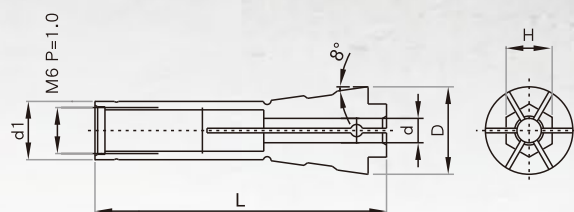
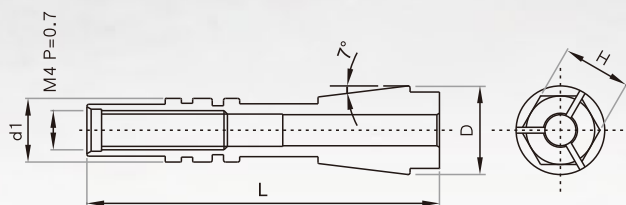
320



PCB
高速鑽孔筒夾系列

73 筒夾

320 筒夾



| Collet Class | Runout |
|--------------|----------|
| A | 0.01 mm |
| AA | 0.005 mm |

| MODEL NO. | H | D | d | d1 | L |
|-----------|-------|-----|------|-------|------|
| 73 筒夾 | 3.175 | 7.0 | 9.05 | 3.175 | 36.0 |

| MODEL NO. | H | D | d | d1 | L |
|-----------|-------|-----|------|-------|------|
| 320 筒夾 | 3.175 | 6.0 | 11.4 | 3.175 | 38.0 |

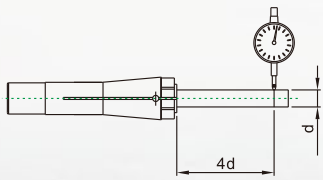
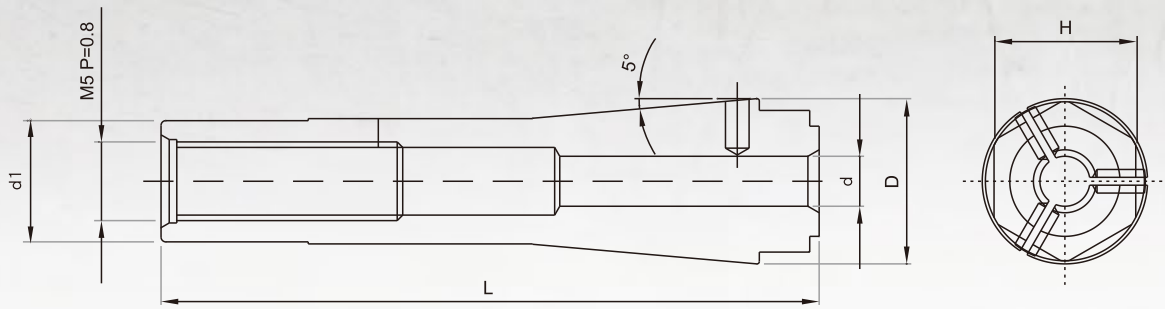
PCB 10-80



PCB 高速鑽孔筒夾系列 / PCB High - Speed Drilling Collet Chuck Series / PCB 高速ドリルコレット / PCB 고속드릴링콜렛시리즈

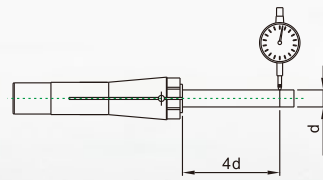
10-80 筒夾

10-88 筒夾



10-80 COLLET
10-88

| Collet Class | Runout |
|--------------|----------|
| A | 0.01 mm |
| AA | 0.005 mm |



10-80 COLLET
10-88

| Collet Class | Runout |
|--------------|----------|
| A | 0.01 mm |
| AA | 0.005 mm |

| MODEL NO. | H | D | d | d1 | L | |
|-----------|-------|-----|------|-------|-----|------|
| 10-80 筒夾 | 3.175 | 9.0 | 10.5 | 3.175 | 7.7 | 41.8 |

| MODEL NO. | H | D | d | d1 | L | |
|-----------|-------|-----|------|-------|-----|------|
| 10-88 筒夾 | 3.175 | 9.0 | 10.5 | 3.175 | 8.0 | 42.0 |

PC



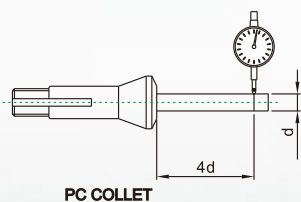
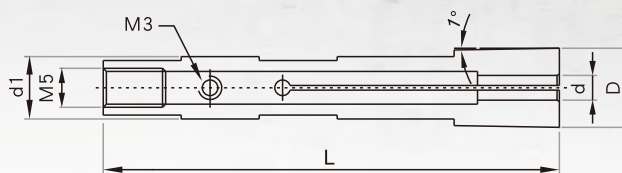
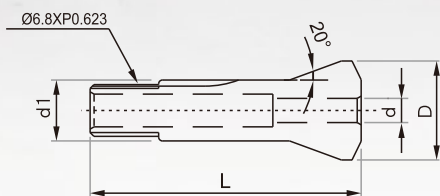
AC



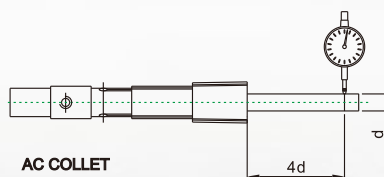
PCB 高速鑽孔筒夾系列

PC 鑽頭夾 / PC Drill Collet Chuck
/ PCドリルコレット / PC 드릴척

AC 鑽頭夾 / AC Drill Collet Chuck
/ ACドリルコレット / AC 드릴척



| Collet Class | Runout |
|--------------|----------|
| A | 0.01 mm |
| AA | 0.005 mm |



| Collet Class | Runout |
|--------------|----------|
| A | 0.01 mm |
| AA | 0.005 mm |

| MODEL NO. | D | d | d1 | L | |
|-----------|-------|----|-------|-----|------|
| PC 鑽頭夾 | 3.175 | 13 | 3.175 | 8.0 | 35.6 |

| MODEL NO. | D | d | d1 | L | |
|-----------|-------|-------|-------|-----|------|
| AC 鑽頭夾 | 3.175 | 10.15 | 3.175 | 8.0 | 58.5 |

200 DA



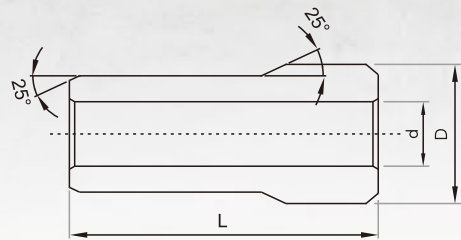
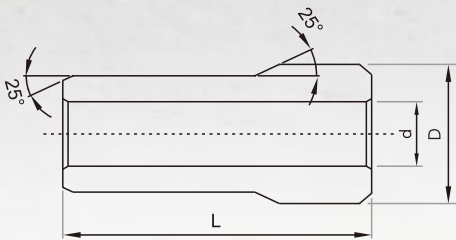
300 DA



氣動筒夾系列 / Pneumatic Collet Chuck Series / 氣動コレット / 공압콜렛시리즈

200DA 大美式彈夾 / 200DA Big American Collet Chuck / 200DA 大アメリカ式コレット / 200DA 대미국식 콜렛

300DA 小美式彈夾 / 300DA Small American Collet Chuck / 300DA 小アメリカ式コレット / 300DA 소미국식 콜렛



| MODEL NO. | D | d | L | |
|----------------|-------|-------|-------|------|
| 200DA 大美式彈夾 | 3/64 | 13.7 | 3/64 | 30.4 |
| | 1/16 | 13.7 | 1/16 | 30.4 |
| | 5/64 | 13.7 | 5/64 | 30.4 |
| | 2/32 | 13.7 | 2/32 | 30.4 |
| | 9/64 | 13.7 | 9/64 | 30.4 |
| | 3.0 | 13.7 | 3.0 | 30.4 |
| | 1/8 | 13.7 | 1/8 | 30.4 |
| | 9/64 | 13.7 | 9/64 | 30.4 |
| | 5/32 | 13.7 | 5/32 | 30.4 |
| | 11/64 | 13.7 | 11/64 | 30.4 |
| | 3/16 | 13.7 | 3/16 | 30.4 |
| | 13/64 | 13.7 | 13/64 | 30.4 |
| | 7/32 | 13.7 | 7/32 | 30.4 |
| | 15/64 | 13.7 | 15/64 | 30.4 |
| | 6.0 | 13.7 | 6.0 | 30.4 |
| | 1/4 | 13.7 | 1/4 | 30.4 |
| | 17/64 | 13.7 | 17/64 | 30.4 |
| | 9/32 | 13.7 | 9/32 | 30.4 |
| | 19/64 | 13.7 | 19/64 | 30.4 |
| | 5/16 | 13.7 | 5/16 | 30.4 |
| | 8.0 | 13.7 | 8.0 | 30.4 |
| | 21/64 | 13.7 | 21/64 | 30.4 |
| | 11/32 | 13.7 | 11/32 | 30.4 |
| | 23/64 | 13.7 | 23/64 | 30.4 |
| 3/8 | 13.7 | 3/8 | 30.4 | |
| 25/64 | 13.7 | 25/64 | 30.4 | |

| MODEL NO. | D | d | L | |
|----------------|-------|------|-------|------|
| 300DA 小美式彈夾 | 3/64 | 9.47 | 3/64 | 25.4 |
| | 1/16 | 9.47 | 1/16 | 25.4 |
| | 5/64 | 9.47 | 5/64 | 25.4 |
| | 2/32 | 9.47 | 2/32 | 25.4 |
| | 9/64 | 9.47 | 9/64 | 25.4 |
| | 3.0 | 9.47 | 3.0 | 25.4 |
| | 1/8 | 9.47 | 1/8 | 25.4 |
| | 9/64 | 9.47 | 9/64 | 25.4 |
| | 5/32 | 9.47 | 5/32 | 25.4 |
| | 11/64 | 9.47 | 11/64 | 25.4 |
| | 3/16 | 9.47 | 3/16 | 25.4 |
| | 13/64 | 9.47 | 13/64 | 25.4 |
| | 7/32 | 9.47 | 7/32 | 25.4 |
| | 15/64 | 9.47 | 15/64 | 25.4 |
| | 6.0 | 9.47 | 6.0 | 25.4 |
| | 1/4 | 9.47 | 1/4 | 25.4 |

BG H8



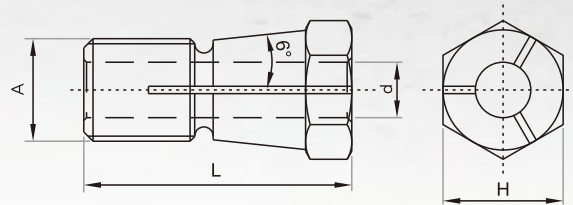
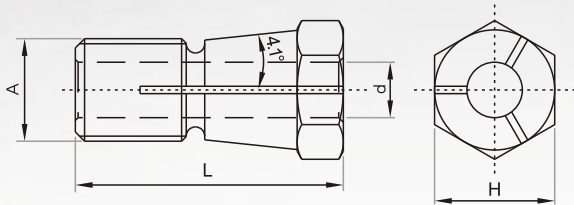
BG H13



氣動筒夾系列

BG-H8

BG-H13



| MODEL NO. | H | d | L | A | |
|-----------|-----|-----|-----|------|-----------|
| BG-H8 | 3.0 | 8.0 | 3.0 | 18.0 | 1/4-28UNF |
| | 1/8 | 8.0 | 1/8 | 18.0 | 1/4-28UNF |

| MODEL NO. | H | d | L | A | |
|-----------|-----|------|-----|------|------------|
| BG-H13 | 3.0 | 13.0 | 3.0 | 29.0 | 7/16-20UNF |
| | 1/8 | 13.0 | 1/8 | 29.0 | 7/16-20UNF |
| | 4.0 | 13.0 | 4.0 | 29.0 | 7/16-20UNF |
| | 6.0 | 13.0 | 6.0 | 29.0 | 7/16-20UNF |

14-
30



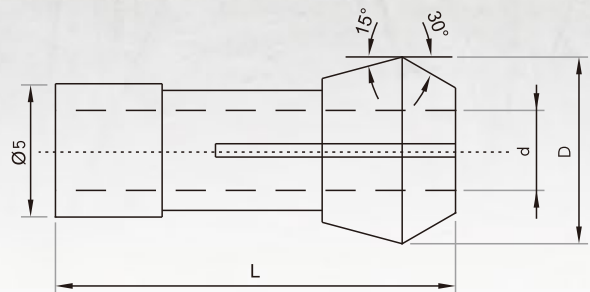
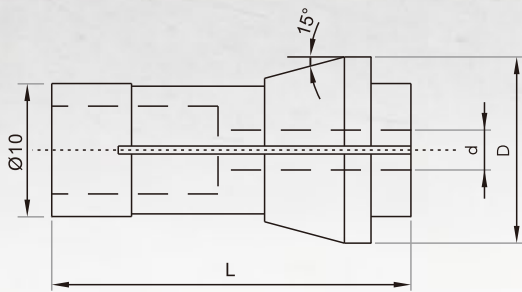
07



氣動筒夾系列 / Pneumatic Collet Chuck Series / 氣動コレット / 공압콜렛시리즈

14筒夾-27 / 14筒夾-30

雕磨機 07 筒夾 / Engraving Machine 07 Collet Chuck / 彫刻研磨機07コレット / 조각기 07콜렛



| MODEL NO. | D | d | L |
|-----------|------|------|------|
| 14筒夾-27 | 2.38 | 14.0 | 27.0 |
| | 3.0 | 14.0 | 27.0 |
| | 1/8 | 14.0 | 27.0 |
| | 6.0 | 14.0 | 27.0 |
| | 1/4 | 14.0 | 27.0 |
| | 8.0 | 14.0 | 27.0 |
| 14筒夾-30 | 2.38 | 14.0 | 30.0 |
| | 3.0 | 14.0 | 30.0 |
| | 1/8 | 14.0 | 30.0 |
| | 6.0 | 14.0 | 30.0 |
| | 1/4 | 14.0 | 30.0 |
| | 8.0 | 14.0 | 30.0 |

| MODEL NO. | D | d | L |
|--------------|------|-----|------|
| 雕磨機 07 筒夾 | 2.38 | 7.0 | 15.0 |
| | 3.0 | 7.0 | 15.0 |
| | 1/8 | 7.0 | 15.0 |

ET



EFS

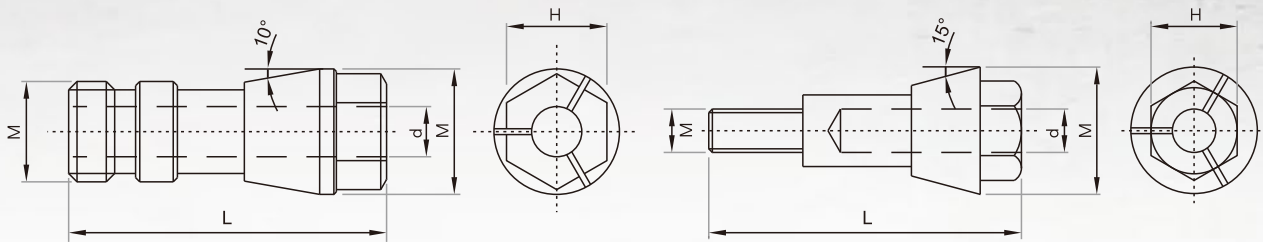


電動筒夾系列

電動筒夾系列 / Electric Tool Collet Chuck Series / 電動コレット / 전동콜릿시리즈

ET 電動六角筒夾 / ET Electric Hexagonal Collet Chuck
/ ET 電動六角形コレット / ET 전동육각형콜릿

EFS 電動六角筒夾 / EFS Electric Hexagonal Collet Chuck
/ EFS 電動六角形コレット / EFS 전동육각형콜릿



| MODEL NO. | H | D | d | M | L |
|-----------|-----|----|----|-----|------------|
| ET | 6.0 | 12 | 15 | 6.0 | M12 P=1 38 |

| MODEL NO. | H | D | d | M | L |
|-----------|-----|----|------|-----|-------------|
| EFS | 6.0 | 12 | 17.5 | 6.0 | M6 P=1 43.2 |

C O L L E T

www.YUHKEE.com.tw

裕可有限公司 YUH KEE CO., LTD.

42743 台中市潭子區潭興路一段 165 巷 7-9 號
No.7-9, Ln. 165, Sec. 1, Tansing Rd., Tanzih Dist., Taichung City 42743, Taiwan
TEL: 886-4-2538-1963 / 2536-2463 FAX: 886-4-2538-1619
E-mail: collet24378800@yahoo.com.tw

版權所有 翻印必究
All Rights Reserved

