

【製造商】



42951 台中市神岡區神林路70巷6-6號

NO. 6-6, LN. 70, SHENLIN RD., SHENGANG DIST.,

TAICHUNG CITY 42951, TAIWAN

E-MAIL : ft0405@futech.com.tw

TEL : 886-4-25610066

FAX : 886-4-25610055

品質穩定  
固若磐石

精準卓越  
萬中選一

來自 MIT 的  
堅持與專注

HIGH SPEED  
HYDRAULIC CHUCK  
ROTARY  
HYDRAULIC CYLINDER  
ACCESSORY

Edition2021.01



**富茂精機  
股份有限公司**

FUTECH PRECISION CO., LTD.



**HIGH SPEED  
HYDRAULIC CHUCK**

**ROTARY  
HYDRAULIC CYLINDER  
ACCESSORY**



[www.futech.com.tw](http://www.futech.com.tw)

通過 CE 認證

# 公司介紹 COMPANY INTRODUCTION

富茂精機股份有限公司，成立於 2015 年，由香港富安實業國際有限公司與台灣富安公司合資成立。目前員工人數約 60 人，擁有多位平均年資 15 年以上資深技術工程師，此些技術骨幹人員分從工具機老廠匯集組成。

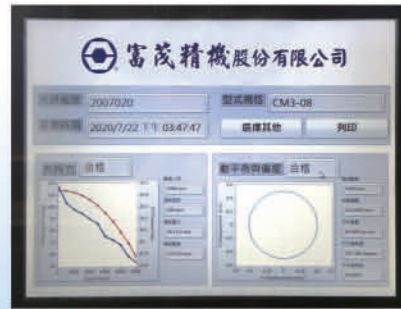
後於 2017 年 4 月與烟台環球機床裝備股份有限公司共同合資成立「山東台富精密機械有限公司」，首度跨界合作。本公司主要生產 CNC 車床、CNC 龍門高速加工機、CNC 鑽銑攻牙機等；另自製高速油壓動力夾頭（卡盤）、高速迴轉油缸及其相關零配件，更與工業技術研究院合作研製出夾頭專用檢測設備，以多達 12 項之檢測項目嚴格檢視每一套產品。

FUTECH PRECISION CO., LTD., established in 2015 by Hong Kong RICH SECURE INTERNATIONAL LIMITED and Taiwan FOAN CO., LTD. FUTECH currently holds nearly 60 employees, including a strong team of senior technical engineers that have an average of 15 years experiences in machine tool factories. In April, 2017, SHANGDONG TAIFU PRECISION MACHINERY CO., LTD. financed by FUTECH and YANTAI UNIVERSAL MACHINE TOOL EQUIPMENT CO., LTD.

FUTECH produces CNC Lathes, Tapping centers, Double column high speed cutting centers, High speed hydraulic chucks, Rotary hydraulic cylinders and other accessories. For higher quality, FUTECH and ITRI developed a chuck testing equipment, which examine strictly each set of chucks with 12 inspection items.



動態檢測設備



檢測畫面



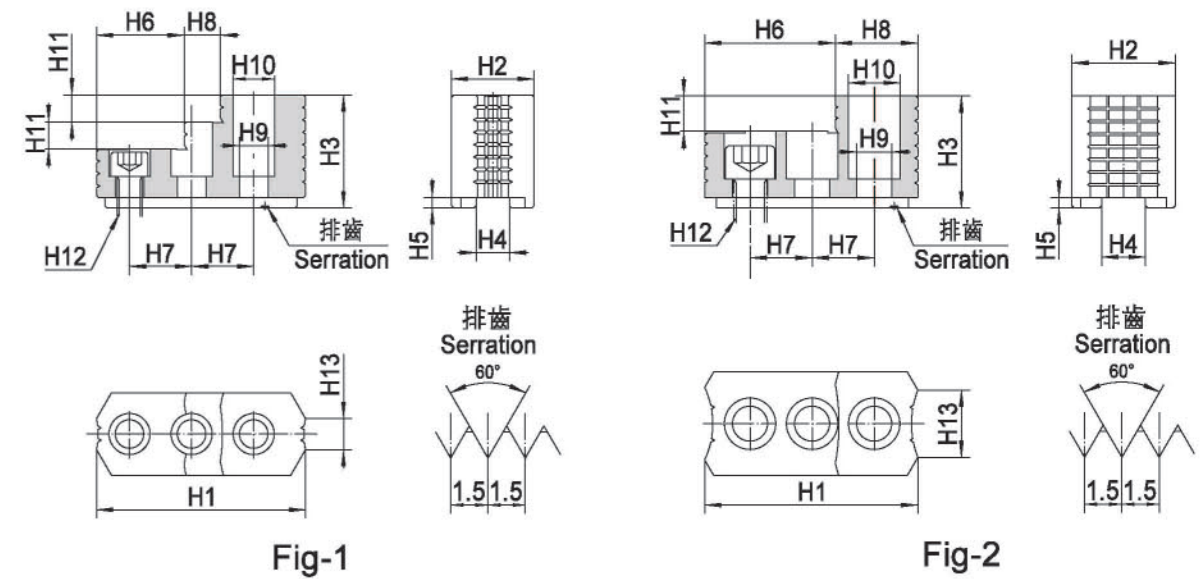
加工設備



## 配件 ACCESSORIES

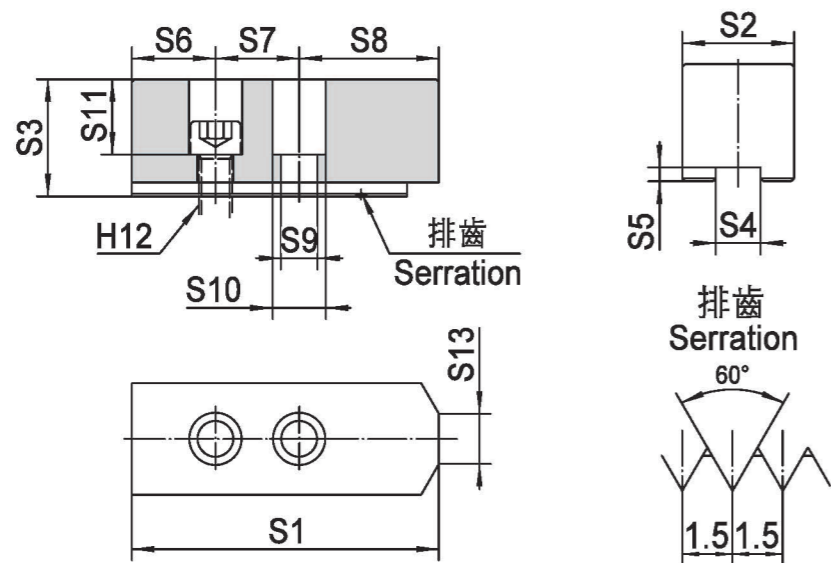
## HJ 硬爪 STANDARD HARD JAW

- 標準型式硬爪。
- 採用高強度鋼，承受大夾持力。
- 硬度高，夾持齒不易變形。
- Standard hard jaw.
- It is made of high strength steel, which can bear high clamping force.
- High hardness, not easy to be damaged.



尺寸 型號 Dim. Model	H1	H2	H3	H4	H5	H6	H7	H8	H-9	H10	H11	H12	H13	適用夾頭 Matching chuck	三爪重量 (kg) 3 Jaw weight	參考圖 Reference drawing
<b>HJ-05</b>	53	23	27.5	10	4	30.5	14	22.5	8.5	13.5	10	M8	6	CH3-05	0.4	Fig-2
<b>HJ-06</b>	67	31	35	12	5	40	20	27.5	11	17	12	M10	11	CH3-06 · CM3-06	1.0	Fig-2
<b>HJ-08</b>	86	35	51	14	5	31	25	18	13	19	12	M12	12	CH3-08 · CM3-08	1.9	Fig-1
<b>HJ-10</b>	101	40	54	16	5	43	30	17	13	19	13	M12	15	CH3-10 · CM3-10	2.9	Fig-1
<b>HJ-12</b>	103	50	52	21	5	62.5	30	40.5	17	25	17	M16	30	CH3-12	3.5	Fig-2
<b>HJ-12M</b>	103	50	52	18	5	62.5	30	40.5	15	22	17	M14	30	CM3-12	3.6	Fig-2
<b>HJ-15</b>	149	62	86	22	8	63	43	34	21	32	20	M20	40	CH3-15	9.6	Fig-1
<b>HJ-15M</b>	149	62	86	25.5	5	63	43	34	21	32	20	M20	40	CM3-15	9.5	Fig-1

- 標準型式軟爪。
- 採用高強度鋼，易於修爪。
- Standard soft jaw.
- High strength steel is adopted, which can be easy to boring.



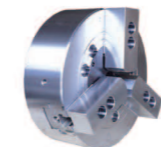
型號 Model	尺寸 Dim.	S1	S2	S3	S4	S5	S6	S7	S8	S9	S10	S11	S12	S13	適用夾頭 Matching chuck	三爪重量 (kg) 3 Jaw weight
<b>SJ-05</b>		62	25	30	10	5	10	14	38	9	14	20	M8	3	CH3-05	0.7
<b>SJ-06</b>		73	31	36	12	5	15	20	38	11	17	24	M10	14	CH3-06 CM3-06	1.5
<b>SJ-08</b>		95	35	37	14	5	24	25	46	13	19	22	M12	16	CH3-08 CM3-08	2.4
<b>SJ-10</b>		110	40	42	16	5	30	30	50	13	19	27	M12	18	CH3-10 CM3-10	3.7
<b>SJ-12</b>		130	50	50	21	5	39	30	61	17	25	30	M16	23	CH3-12	6.5
<b>SJ-12M</b>		130	50	50	18	5	39	30	61	15	23	30	M14	23	CM3-12	6.6
<b>SJ-15</b>		165	62	62	22	8	37	43	85	21	32	37	M20	62	CH3-15	12.5
<b>SJ-15M</b>		165	62	62	25.5	5	37	43	85	21	32	37	M20	62	CM3-15	12.4

高速油壓夾頭  
HIGH SPEED  
HYDRAULIC  
CHUCK



**CH3**  
三爪中空高速油壓夾頭  
3-JAW THRU-HOLE HIGH SPEED HYDRAULIC CHUCK

PAGE **01**



**CM3**  
三爪中實高速油壓夾頭  
3-JAW SOLID HIGH SPEED HYDRAULIC CHUCK

PAGE **03**

迴轉油壓缸  
ROTARY  
HYDRAULIC  
CYLINDER



**HHR**  
中空迴轉油壓缸 (附逆止閥)  
THRU-HOLE ROTARY HYDRAULIC CYLINDER  
WITH CHECK VALVE

PAGE **05**



**HHS**  
短型中空迴轉油壓缸 (附逆止閥)  
SHORT TYPE THRU-HOLE ROTARY HYDRAULIC  
CYLINDER WITH CHECK VALVE

PAGE **06**



**MHR-C**  
中實迴轉油壓缸 (附逆止閥)  
SOLID ROTARY HYDRAULIC CYLINDER  
WITH CHECK VALVE

PAGE **07**



**MHR-CS**  
中實迴轉油壓缸 (附逆止閥及行程檢測)  
SOLID ROTARY HYDRAULIC CYLINDER  
WITH CHECK VALVE AND STROKE CONTROL

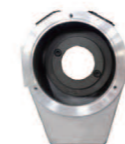
PAGE **08**

配件  
ACCESSORIES



**CT/CT-S**  
集水盒 (適用 HHR 系列油壓缸)  
COOLANT COLLECTOR  
(Matching HHR Series Rotary Hydraulic Cylinder)

PAGE **09**



**CW/CW-S**  
集水盒 (適用 HHS 系列短型油壓缸)  
COOLANT COLLECTOR  
(Matching HHS Series Rotary Hydraulic Cylinder)

PAGE **10**



**SJ**  
軟爪  
STANDARD SOFT JAW

PAGE **11**



**HJ**  
硬爪  
STANDARD HARD JAW

PAGE **12**

技術資料  
TECHNICAL  
INFORMATION

中空拉桿的計算與製作  
THE CALCULATION AND MANUFACTURE OF DRAW PIPE

中實拉桿的計算與製作  
THE CALCULATION AND MANUFACTURE OF DRAW PIPE

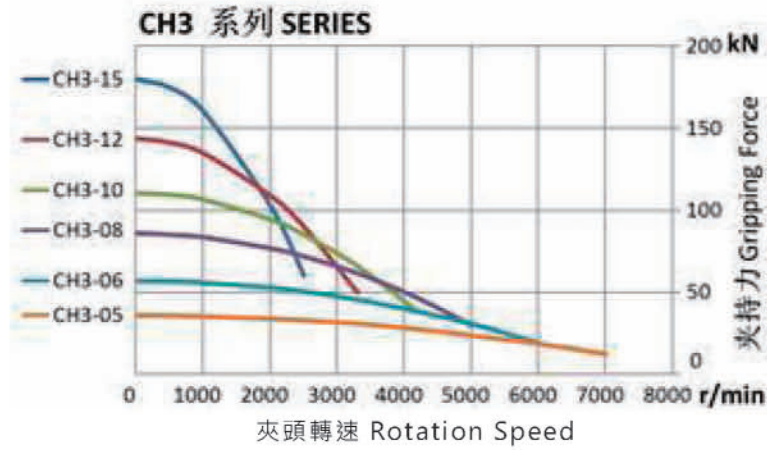
PAGE **13**

PAGE **14**

高速油壓夾頭  
HIGH SPEED  
HYDRAULIC  
CHUCK

CH3 三爪中空高速油壓夾頭  
3-JAW THRU-HOLE HIGH SPEED HYDRAULIC CHUCK

- 楔式三爪大通孔，可貫通裝夾細長軸類工件。
- 連接型式符合 GB/T 5900.1、ISO 702-1 中 A2 型主軸端部標準。
- 適合高精高速加工需求。
- Wedge-type 3-jaw power chuck with the large thru-hole is able to penetrate shaft type workpiece.
- Connection type is designed according to the standard of GB/T 5900.1 or ISO 702-1.
- Suitable for high precision and high speed requirements.

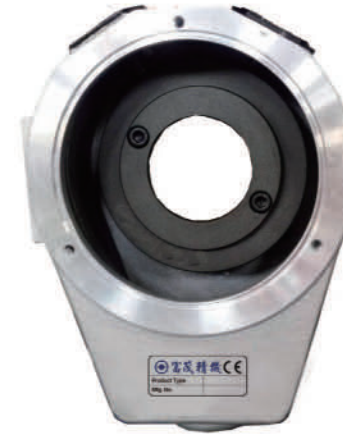


夾頭轉速與夾持力關係曲線圖  
The relation diagram of rotational speed and gripping force

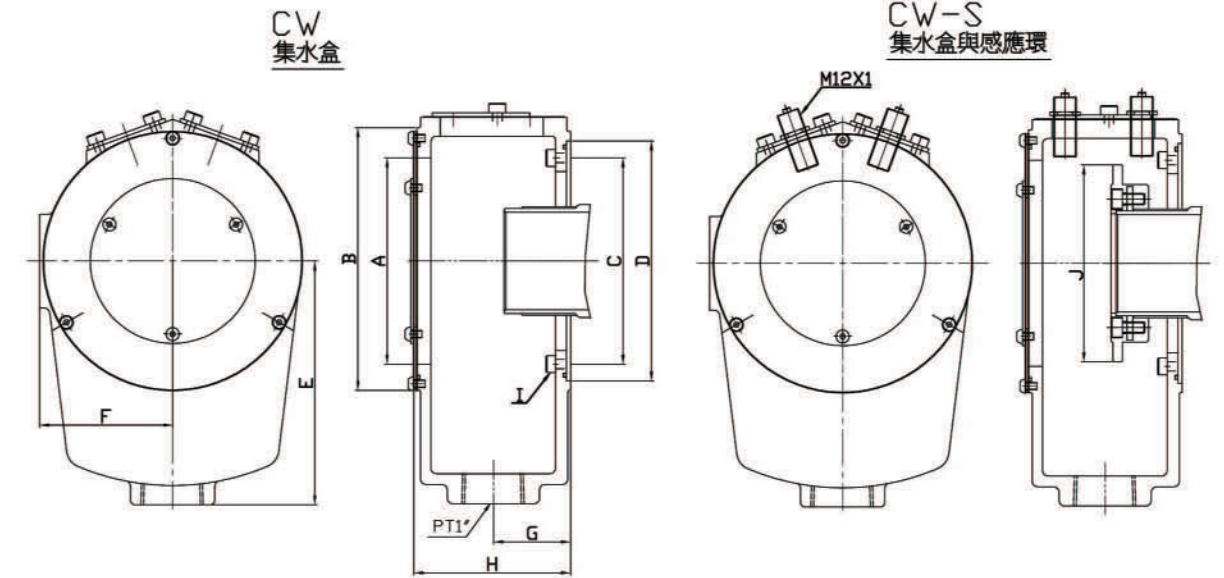
項目 Item 型號 Model	連接 形式 Taper hole	楔心 行程 Plunger stroke mm	爪行程 (直徑) Jaw stroke (Dia.) mm	容許 油缸拉力 Max. D.B. pull kN	最大夾持力 Max. clamping force kN	最高轉速 Max. speed r/min	適用 油缸型號 Matching cyl.	最大 使用壓力 Max pressure MPa	適用硬爪 型號 Matching hard jaw	適用軟爪 型號 Matching soft jaw	夾持直徑範圍 Jamming range		貫通孔徑 Thru-hole mm	重量 Weight kg	慣性矩 Moment of inertia kg·m <sup>2</sup>
											max mm	min mm			
CH3-05	A4	10	5.4	17.1	36	7000	HHR-536	2.8	HJ-05	SJ-05	135	6	33	7.8	0.020
	A5													9	0.023
CH3-06	A4	12	5.5	21.5	57	6000	HHR-646	2.8	HJ-06	SJ-06	169	15	45	15.5	0.065
	A5													14.7	0.062
CH3-08	A6	16	7.4	34.3	87	5000	HHR-852	2.6	HJ-08	SJ-08	210	10	52	25.8	0.190
	A8													25	0.184
CH3-10	A6	19	8.8	42.6	111	4200	HHR-1075	2.7	HJ-10	SJ-10	254	25	75	29.3	0.217
	A10													40	0.370
CH3-12	A8	23	10.6	54.9	144	3300	HHR-1291	2.7	HJ-12	SJ-12	304	30	91	38	0.340
	A11													48	0.436
CH3-15	A8	23	10.6	71	180	2500	HHR-1512	2.3	HJ-15	SJ-15	381	50	117.5	62	0.809
	A11													60	0.770
	A15													70	0.912
														125	2.255
														118	2.241
														138	2.822

配件  
ACCESSORIES

CW/CW-S 集水盒 (適用 HHS 系列短型油壓缸)  
COOLANT COLLECTOR  
(Matching HHS Series Rotary Hydraulic Cylinder)



- 用於收集沿主軸內孔流出的切削液。
- 適配於中空迴轉油壓缸。
- CW-S 型附帶行程控制裝置。
- Collect the coolant flowing out of the hole of the spindle.
- Matching thru-hole rotary cylinder.
- CW-S type with stroke control.



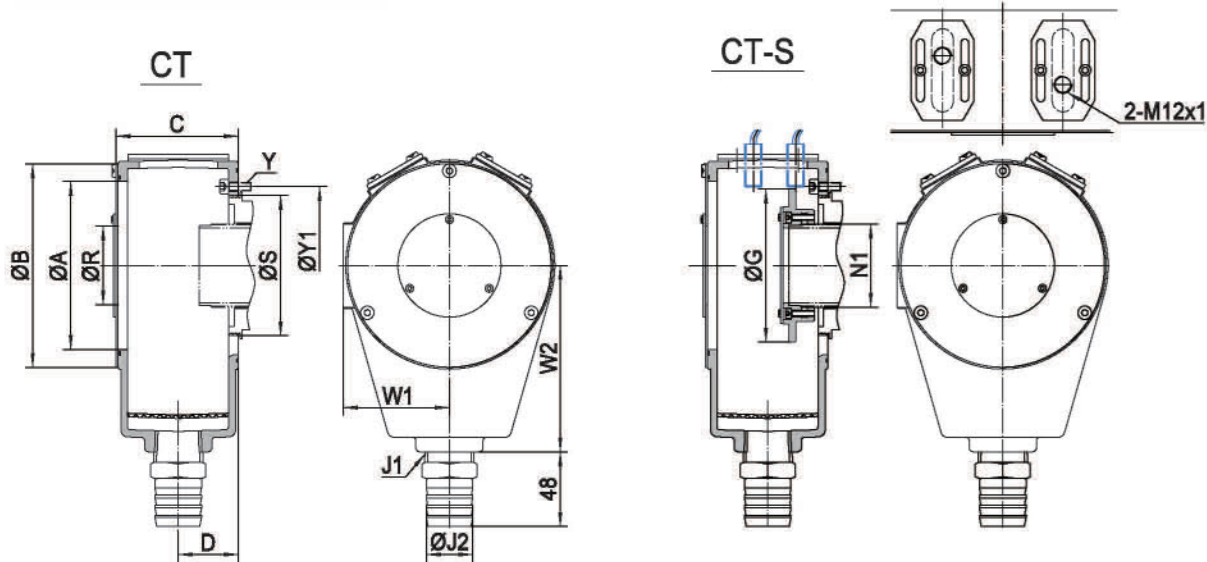
型號 Model	尺寸 Dim.	A	B	C	D	E	F	G	H	I	D	適配迴轉油缸 Matching Cyl.	重量 (kg) Weight
CW-05	87	110	88.5	98	110	57	31	64	M5*0.8	86	HHS-536	0.9	
CW-05S												1.1	
CW-06	100	125	98	116	120	64.5	38	78	M6*1	94	HHS-646	1.2	
CW-06S												1.6	
CW-08	110	138	110	128	130	71	41	84	M6*1	105	HHS-852	1.3	
CW-08S												1.8	
CW-10	158	185	155	164	159	95	45	88	M6*1	130	HHS-1075	1.9	
CW-10S												2.6	
CW-12	158	185	165	180	159	95	45	88	M6*1	145	HHS-1291	1.9	
CW-12S												2.6	

# CT/CT-S 集水盒 (適用 HHR 系列油壓缸)

## COOLANT COLLECTOR (Matching HHR Series Rotary Hydraulic Cylinder)



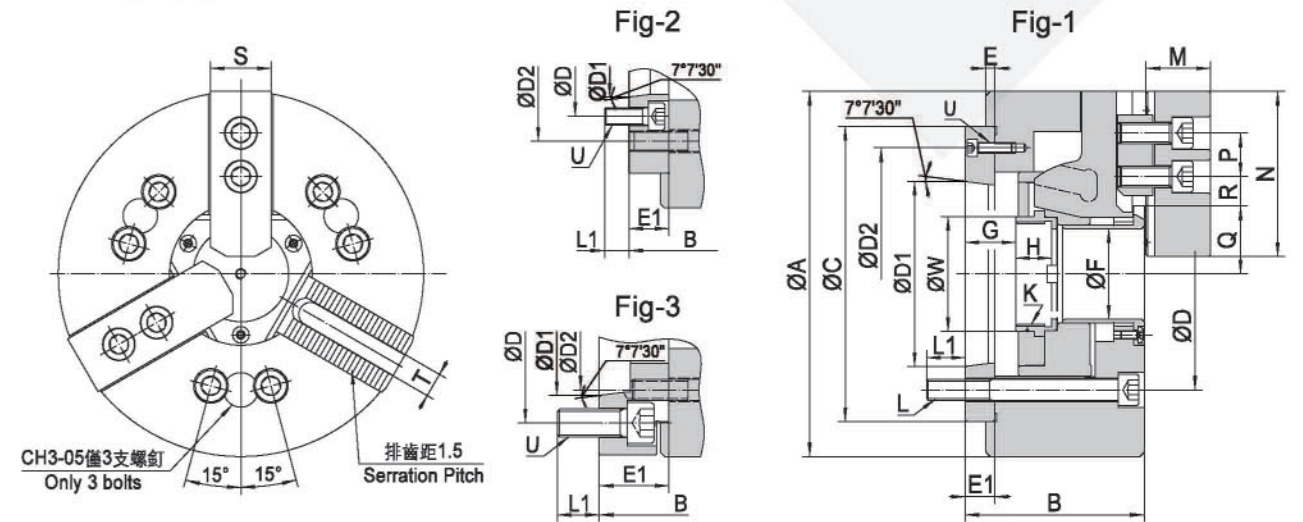
- 用於收集沿主軸內孔流出的切削液。
- 適配於中空迴轉油壓缸。
- CT-S 型附帶行程控制裝置。
- Collect the coolant flowing out of the hole of the spindle.
- Matching thru-hole rotary cylinder.
- CT-S type with stroke control.



型號 Model	尺寸 Dim.	A	B	C	D	G	J1	J2	N1	R	S	W1	W2	Y	Y1	適配迴轉油缸 Matching Cyl.	重量 (kg) Weight
CT-05		82.5	106	71.5	35	—	PT3/4	16.6	—	40	75	55.5	105	6-M5	88	HHR-536	0.8
CT-05S						77			M44x1.5								1.0
CT-06		117.5	142	85.5	42	—	PT1	32.5	—	48	87	74	130	4-M5	98	HHR-646	1.2
CT-06S						107			M52x1.5								1.6
CT-08		117.5	142	85.5	42	—	PT1	32.5	—	55	98	74	130	4-M5	110	HHR-852	1.1
CT-08S						107			M58x1.5								1.6
CT-10		155	184	86.5	42.5	—	PT1	32.5	—	80	123	94	150	4-M6	155	HHR-1075	1.3
CT-10S						147			M84x2								2.0
CT-12		155	184	86.5	42.5	—	PT1	32.5	—	95	140	94	150	4-M6	165	HHR-1291	1.2
CT-12S						147			M99x2								2.1
CT-15		200	230	89.5	44	—	PT1	32.5	—	120	179	117	180	4-M6	206	HHR-1512	1.5
CT-15S						192			M134x2								2.4

# 高速油壓夾頭 HIGH SPEED HYDRAULIC CHUCK

# CH3 三爪中空高速油壓夾頭 3-JAW THRU-HOLE HIGH SPEED HYDRAULIC CHUCK



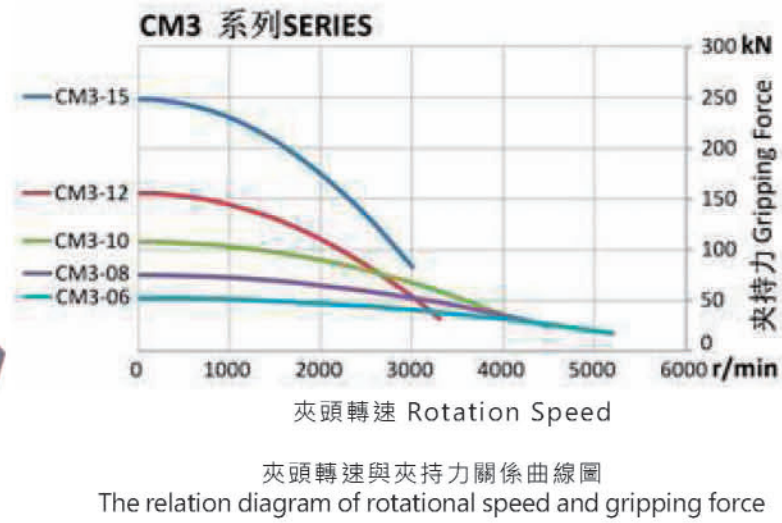
型號 Model	尺寸 Dim.	A	B	C (H6)	D	D1	D2	E	E1	F	G max.	G min.	H	參考圖 Reference Drawing
CH3-05A4		135	71	110	82.55	63.513	96	4	15	33	16	6	20	Fig-1
CH3-05A5		135	88	110	104.78	82.563	82.55	4	32	33	33	23	20	Fig-3
CH3-06A4		169	96	140	82.55	63.513	104.78	5	20	45	31	19	20	Fig-2
CH3-06A5		169	91	140	104.78	82.563	116	5	15	45	26	14	20	Fig-1
CH3-06A6		169	111	140	133.35	106.375	104.78	5	35	45	46	34	20	Fig-3
CH3-08A5		210	109	170	104.78	82.563	133.35	5	23	52	37.5	21.5	20.5	Fig-2
CH3-08A6		210	103	170	133.35	106.375	150	5	17	52	31.5	15.5	20.5	Fig-1
CH3-08A8		210	126	170	171.45	139.719	133.35	5	40	52	54.5	38.5	20.5	Fig-3
CH3-10A6		254	120	220	133.35	106.375	171.45	5	25	75	33.5	14.5	25	Fig-2
CH3-10A8		254	113	220	171.45	139.719	190	5	18	75	26.5	7.5	25	Fig-1
CH3-10A11		254	145	220	235	196.869	171.45	5	50	75	58.5	39.5	25	Fig-3
CH3-12A6		304	129	220	133.35	106.375	171.45	6	25	91	33	10	28	Fig-2
CH3-12A8		304	122	220	171.45	139.719	190	6	18	91	26	3	28	Fig-1
CH3-12A11		304	154	220	235	196.869	171.45	6	50	91	58	35	28	Fig-3
CH3-15A8		381	160	300	171.45	139.719	235	6	33	117.5	40	17	43	Fig-2
CH3-15A11		381	149	300	235	196.869	260	6	22	117.5	29	6	43	Fig-1
CH3-15A15		381	184	300	330.2	285.775	235	6	57	117.5	64	41	43	Fig-3

型號 Model	尺寸 Dim.	K max.	L	L1	M	N	P	Q max.	R max.	R min.	S	T	U	W	參考圖 Reference Drawing
CH3-05A4		M40x1.5	3-M10	15	31	62	14	26.3	20.5	5.2	25	10	3-M6	45	Fig-1
CH3-05A5		M40x1.5	3-M10	14	31	62	14	26.3	20.5	5.2	25	10	6-M10	45	Fig-3
CH3-06A4		M55x2	6-M10	16	37	73	20	32.6	24.2	9.5	31	12	6-M10	60	Fig-2
CH3-06A5		M55x2	6-M10	16	37	73	20	32.6	24.2	9.5	31	12	3-M6	60	Fig-1
CH3-06A6		M55x2	6-M10	16	37	73	20	32.6	24.2	9.5	31	12	6-M12	60	Fig-3
CH3-08A5		M60x2	6-M12	14	38	95	25	39.5	30.5	11.1	35	14	6-M10	66	Fig-2
CH3-08A6		M60x2	6-M12	18	38	95	25	39.5	30.5	11.1	35	14	3-M6	66	Fig-1
CH3-08A8		M60x2	6-M12	24	38	95	25	39.5	30.5	11.1	35	14	6-M16	66	Fig-3
CH3-10A6		M85x2	6-M16	18	43	110	30	53.8	34.0	11.1	40	16	6-M12	94	Fig-2
CH3-10A8		M85x2	6-M16	24	43	110	30	53.8	34.0	11.1	40	16	3-M8	94	Fig-1
CH3-10A11		M85x2	6-M16	28	43	110	30	53.8	34.0	11.1	40	16	6-M20	94	Fig-3
CH3-12A6		M100x2	6-M16	18	51	130	30	61	46.5	11.7	50	21	6-M12	108	Fig-2
CH3-12A8		M100x2	6-M16	25	51	130	30	61	46.5	11.7	50	21	3-M8	108	Fig-1
CH3-12A11		M100x2	6-M16	28	51	130	30	61	46.5	11.7	50	21	6-M20	108	Fig-3
CH3-15A8		M130x2	6-M20	24	66	165	43	82	45.2	15.2	62	22	6-M16	139	Fig-2
CH3-15A11		M130x2	6-M20	28	66	165	43	82	45.2	15.2	62	22	3-M10	139	Fig-1
CH3-15A15		M130x2	6-M20	29	66	165	43	82	45.2	15.2	62	22	6-M24	139	Fig-3

高速油壓夾頭  
HIGH SPEED  
HYDRAULIC  
CHUCK

CM3 三爪中實高速油壓夾頭  
3-JAW SOLID HIGH SPEED HYDRAULIC CHUCK

- 楔式三爪中實型。
- 連接型式符合 GB/T 5900.1、ISO 702-1 中 A2 型主軸端部標準。
- 適合高精高速加工需求。
- Wedge-type 3-jaw solid power chuck.
- Connection type is designed according to the standard of GB/T 5900.1 or ISO 702-1.
- Suitable for high precision and high speed requirements.

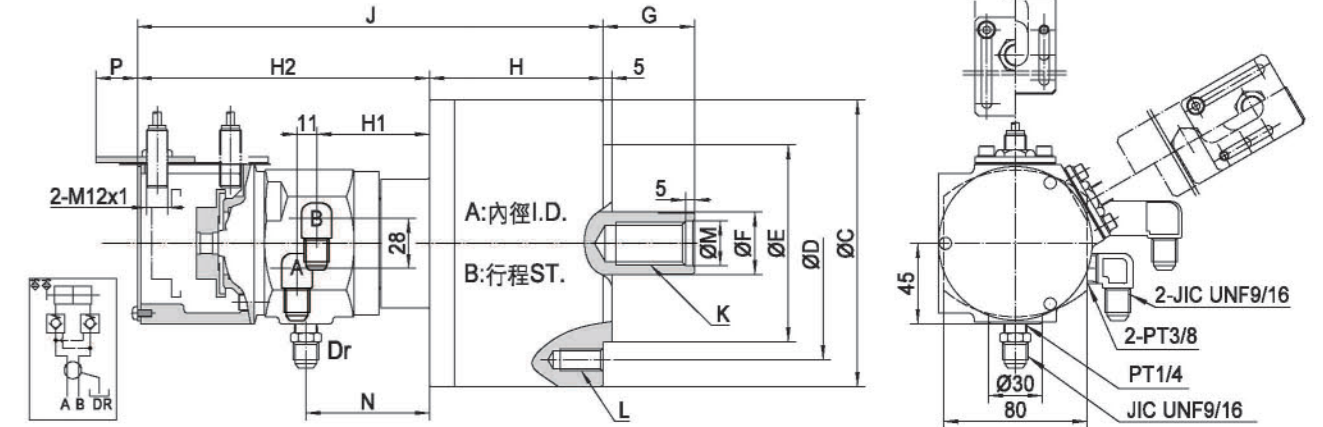


項目 Item 型號 Model	連接形式 Taper hole	襯心行程 Plunger stroke mm	爪行程 (直徑) Jaw stroke (Dia.) mm	容許 油缸拉力 Max. D.B. pull kN	最大夾持力 Max. clamping force kN	最高轉速 Max. speed r/min	適用 油缸型號 Matching cyl.	最大 使用壓力 Max pressure MPa	適用 硬爪型號 Matching hard jaw	適用 軟爪型號 Matching soft jaw	夾持直徑範圍 Jamming range		重量 Weight kg	慣性矩 Moment of inertia kg·m <sup>2</sup>
											max	min		
CM3-06	A4	20	9.2	18	52.5	5200	MHR-105 MRS-105	2.6	HJ-06	SJ-06	165	18	14.5	0.062
	A5												13.9	0.056
	A6												15.8	0.059
CM3-08	A5	21	9.7	25	75	4500	MHR-125 MRS-125	2.5	HJ-08	SJ-08	210	26	26.8	0.154
	A6												25.6	0.147
	A8												30	0.172
CM3-10	A6	25	8.8	29	108	4000	MHR-125 MRS-125	2.8	HJ-10	SJ-10	254	26	41.8	0.350
	A8												39.6	0.330
	A11												50	0.417
CM3-12	A6	30	10.6	41	156	3300	MHR-150 MRS-150	2.7	HJ-12M	SJ-12M	304	26	67.6	0.760
	A8												65.5	0.750
	A11												75.9	0.888
CM3-15	A8	35	16.0	82	249	3000	MHR-200 MRS-200	3.2	HJ-15M	SJ-15M	381	68	119	2.120
	A11												113	2.050
	A15												132	2.560

迴轉油壓缸  
ROTARY  
HYDRAULIC  
CYLINDER

MHR-CS 中實迴轉油壓缸 (附逆止閥及行程檢測)  
SOLID ROTARY HYDRAULIC CYLINDER  
WITH CHECK VALVE AND STROKE CONTROL

- 高速、輕量型迴轉油缸。
- 內置逆止閥自鎖機構，在設備壓力源或管路出現故障時，確保內部壓力不致劇降，持續夾持工件。
- 感應式接近開關，行程調整便捷，確認油缸動作正確。
- High speed, light weight.
- Built-in check valve, which prevents the internal pressure from sudden decline, for the purpose of maintaining steady clamping.
- With proximity sensor, the movement of the position is easy to adjust and confirm when operating.



型號 Model	尺寸 Dim. mm	活塞內徑 Piston I.D. mm	活塞行程 Piston stroke mm	有效活塞面積 Eff. piston area cm <sup>2</sup>		最大輸出力 Max. output force kN		最大使用壓力 Max. operating Pressure MPa	最高轉速 Max. speed r/min	慣性矩 Moment of inertia kg·m <sup>2</sup>	重量 Weight kg	總流量 Total leakage L/min
				推側 Push cm <sup>2</sup>	拉側 Pull cm <sup>2</sup>	推力 Push kN	拉力 Pull kN					
MHR-105CS	105	20	86	79	32	29	4.0	6000	0.013	7.6	0.8	
MHR-125CS	125	25	122	113	46	42	4.0	6000	0.023	10.5	0.8	
MHR-150CS	150	30	176	160	66	60	4.0	5500	0.048	14	0.8	
MHR-200CS	200	35	314	290	117	108	4.0	5500	0.098	22.5	0.8	

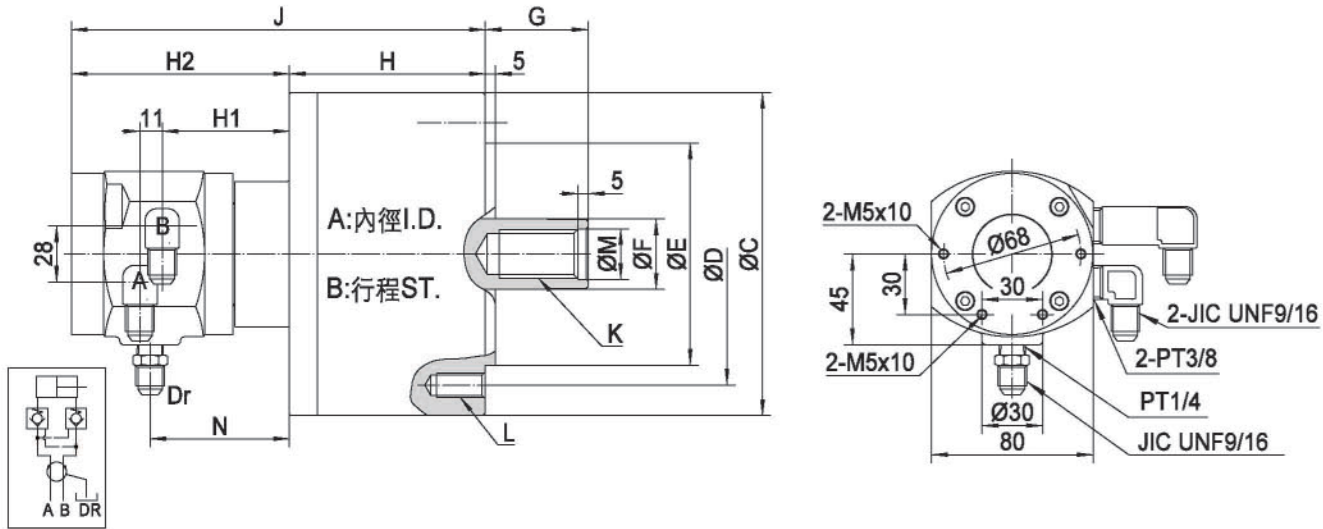
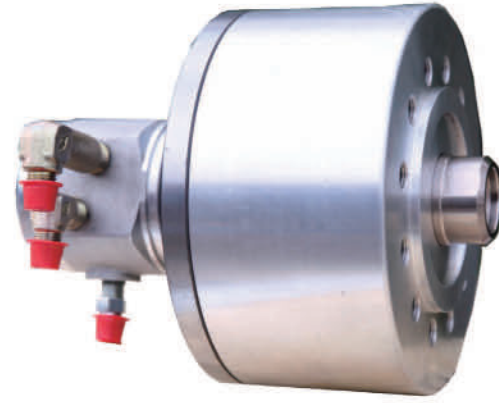
型號 Model	尺寸 Dim.	A	B	C	D	E (h7)	F	G		H	H1	H2	J	K	L	M (H8)	N	P max.
								max.	min.									
MHR-105CS	105	20	135	100	80	30	45	25	89	63	168	257	M20x35	6-M10x20	21	69	23	
MHR-125CS	125	25	160	130	110	35	51	26	97	63	168	265	M24x44	6-M12x24	25	69	23	
MHR-150CS	150	30	190	130	110	45	56	26	106	63	168	274	M30x45	12-M12x24	31	69	23	
MHR-200CS	200	35	245	145	120	55	69	34	122	61	168	288	M36x60	12-M13x30	37	67	28	

\* 接近開關需另購。  
The proximity switch needs to be purchased separately.

迴轉油壓缸  
ROTARY  
HYDRAULIC  
CYLINDER

MHR-C 中實迴轉油壓缸 (附逆止閥)  
SOLID ROTARY HYDRAULIC CYLINDER  
WITH CHECK VALVE

- 高速、輕量型。
- 內置逆止閥自鎖機構，在設備壓力源或管路出現故障時，確保內部壓力不致劇降，持續夾持工件。
- High speed, light weight.
- Built-in check valve, which prevents the internal pressure from sudden decline, for the purpose of maintaining steady clamping.

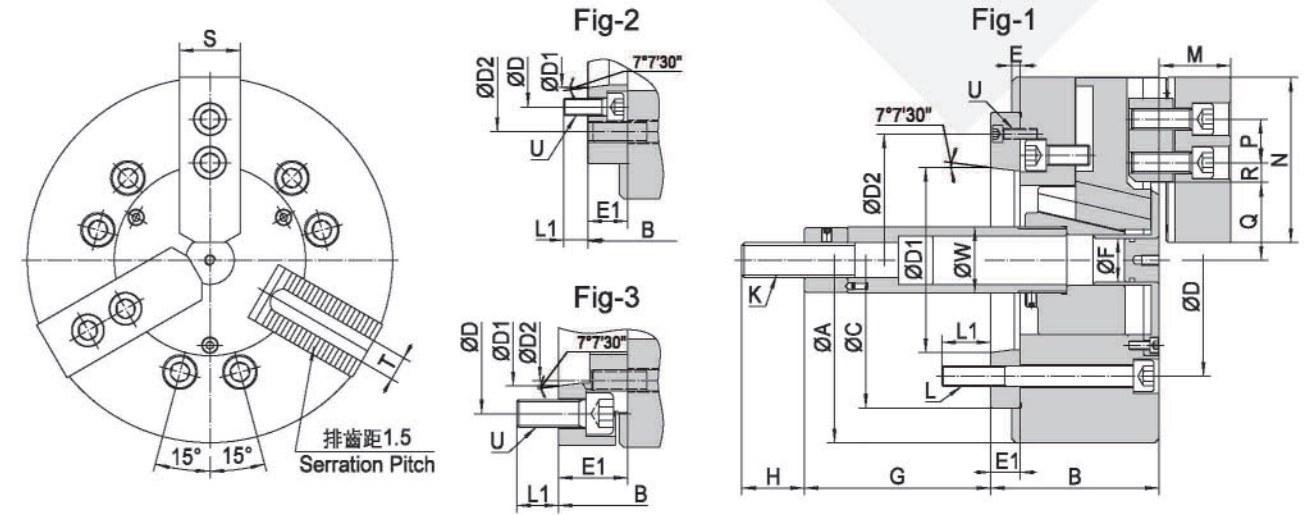


型號 Model	尺寸 Dim. mm	活塞內徑 Piston I.D. mm	活塞行程 Piston stroke mm	有效活塞面積 Eff. piston area cm <sup>2</sup>		最大輸出力 Max. output force kN		最大使用壓力 Max. operating pressure MPa	最高轉速 Max. speed r/min	慣性矩 Moment of inertia kg·m <sup>2</sup>	重量 Weight kg	總流量 Total leakage L/min
				推側 Push	拉側 Pull	推力 Push	拉力 Pull					
MHR-105C	105	20	86	79	32	29	4.0	6000	0.013	7.1	0.8	
MHR-125C	125	25	122	113	46	42	4.0	6000	0.023	10.0	0.8	
MHR-150C	150	30	176	160	66	60	4.0	5500	0.048	13.5	0.8	
MHR-200C	200	35	314	290	117	108	4.0	5500	0.098	22	0.8	

型號 Model	尺寸 Dim. mm	A	B	C	D	E (h7)	G		H	H1	H2	J	K	L	M (H8)	N
							max.	min.								
MHR-105C	105	20	135	100	80	30	45	25	89	63	108	197	M20x35	6-M10x20	21	69
MHR-125C	125	25	160	130	110	35	51	26	97	63	108	205	M24x44	6-M12x24	25	69
MHR-150C	150	30	190	130	110	45	56	26	106	63	108	214	M30x45	12-M12x24	31	69
MHR-200C	200	35	245	145	120	55	69	34	122	61	108	228	M36x60	12-M13x30	37	67

高速油壓夾頭  
HIGH SPEED  
HYDRAULIC  
CHUCK

CM3 三爪中實高速油壓夾頭  
3-JAW SOLID HIGH SPEED HYDRAULIC CHUCK



型號 Model	尺寸 Dim.	A	B	C (H6)	D	D1	D2	E	E1	F	G max.	G min.	H	參考圖 Reference Drawing
CM3-06A4	165	89	140	82.55	65.513	104.78	5	20	21	84.6	64.6	36	Fig-2	
CM3-06A5	165	84	140	104.78	82.563	116	5	15	21	89.6	69.6	36	Fig-1	
CM3-06A6	165	104	140	133.35	106.375	104.78	5	35	21	69.6	49.6	36	Fig-3	
CM3-08A5	210	103	170	104.78	82.563	133.35	5	23	25	109	88	36	Fig-2	
CM3-08A6	210	97	170	133.35	106.375	150	5	17	25	115	94	36	Fig-1	
CM3-08A8	210	120	170	171.45	139.719	133.35	5	40	25	92	71	36	Fig-3	
CM3-10A6	254	109	220	133.35	106.375	171.45	5	25	34	133	108	36	Fig-2	
CM3-10A8	254	103	220	171.45	139.719	190	5	18	34	140	115	36	Fig-1	
CM3-10A11	254	134	220	235	196.869	171.45	5	50	34	108	83	36	Fig-3	
CM3-12A6	304	125	220	133.35	106.375	171.45	6	25	34	138	108	36	Fig-2	
CM3-12A8	304	116.5	220	171.45	139.719	190	6	18	34	145	115	36	Fig-1	
CM3-12A11	304	150	220	235	196.869	171.45	6	50	34	113	83	36	Fig-3	
CM3-15A8	381	141	300	171.45	139.719	235	6	33	—	71	36	55	Fig-2	
CM3-15A11	381	130	300	235	196.869	260	6	22	—	82	47	55	Fig-1	
CM3-15A15	381	165	300	330.2	285.775	235	6	57	—	47	12	55	Fig-3	

型號 Model	尺寸 Dim.	K max.	L	L1	M	N	P	Q max.	R max.	R min.	S	T	U	W	參考圖 Reference Drawing
CM3-06A4	M16x2.0	6-M10	16	39	73	20	38.2	17.2	11	31	12	6-M10	34	Fig-2	
CM3-06A5	M16x2.0	6-M10	14	39	73	20	38.2	17.2	11	31	12	3-M6	34	Fig-1	
CM3-06A6	M16x2.0	6-M10	16	39	73	20	38.2	17.2	11	31	12	6-M12	34	Fig-3	
CM3-08A5	M20x2.5	6-M12	14	41	95	25	42.9	23	9.4	35	14	6-M10	38	Fig-2	
CM3-08A6	M20x2.5	6-M12	18	41	95	25	42.9	23	9.4	35	14	3-M6	38	Fig-1	
CM3-08A8	M20x2.5	6-M12	24	41	95	25	42.9	23	9.4	35	14	6-M16	38	Fig-3	
CM3-10A6	M20x2.5	6-M16	18	46	110	30	49.3	34	8.2	40	16	6-M12	45	Fig-2	
CM3-10A8	M20x2.5	6-M16	25	46	110	30	49.3	34	8.2	40	16	3-M8	45	Fig-1	
CM3-10A11	M20x2.5	6-M16	28	46	110	30	49.3	34	8.2	40	16	6-M20	45	Fig-3	
CM3-12A6	M20x2.5	6-M16	18	54	130	30	57.7	49	10.5	50	18	6-M12	50	Fig-2	
CM3-12A8	M20x2.5	6-M16	25	54	130	30	57.7	49	10.5	50	18	3-M8	50	Fig-1	
CM3-12A11	M20x2.5	6-M16	28	54	130	30	57.7	49	10.5	50	18	6-M20	50	Fig-3	
CM3-15A8	M30x3.5	6-M20	24	63	165	43	77.5	50	21.3	62	25.5	6-M16	60	Fig-2	
CH3-15A11	M130x2	6-M20	28	66	165	43	82	45.2	15.2	62	22	3-M10	139	Fig-1	
CH3-15A15	M130x2	6-M20	29	66	165	43	82	45.2	15.2	62	22	6-M24	139	Fig-3	

